



LA10728

Design For The People Maple Pendant

SOURCE: <https://www.davidvillagelighting.co.uk/product/Design-For-The-People-Maple-Pendant/10000871>



PRODUCT DESCRIPTION

Designer: Charlotte Honcke Design

Design For The People Maple Pendant

Inspired by a flower, the Maple Pendant was designed by Charlotte Høncke for Design For The People. The unique shade boasts organic shapes and is made of two overlapping layers, designed to resemble the petals of a flower. These petals create beautiful shading patterns when the light is turned on. The pendant becomes a lightweight and airy piece of art in whichever room you decide to display it in, which is exactly what Charlotte Høncke was hoping to achieve. She wanted to create a cosy light that doesn't feel too heavy or dominant in your room.

The soft Scandinavian design and muted colour options means Maple can blend into a vast majority of modern and minimalistic interiors. The Maple Pendant is perfect for hanging above your dining table or coffee table to act as a warm, yet functional ambient light.

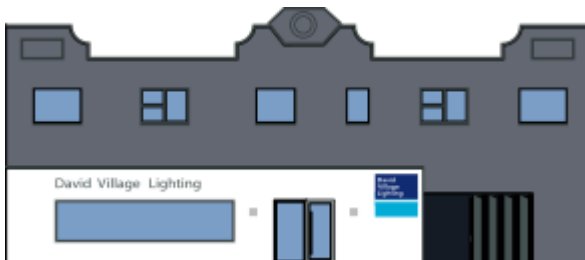
PRODUCT SPECIFICATION

Light Source: 1 x Max 40W E27 (excluded)

IP Code: 20

Dimming: Dimmable via mains phase dimming.

Dimensions: Shade: Ø55cm
Shade Height: 19cm
Ceiling Canopy: Ø11.7cm
Ceiling Canopy Height: 9cm
Maximum Drop: 300cm



For all sales and technical enquiries, please contact:

+44 (0)114 263 4266

info@davidvillagelighting.co.uk

www.davidvillagelighting.co.uk