



# Slamp Charlotte Wall Lamp

LA5104/W

SOURCE: <https://www.davidvillagelighting.co.uk/product/Slamp-Charlotte-Wall-Lamp/10000847>



## PRODUCT DESCRIPTION

**Designer:** Doriana & Massimiliano Fuksas

### Charlotte Wall Light

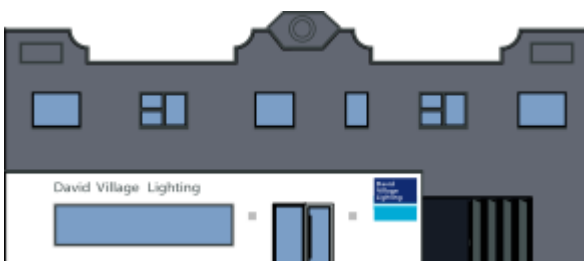
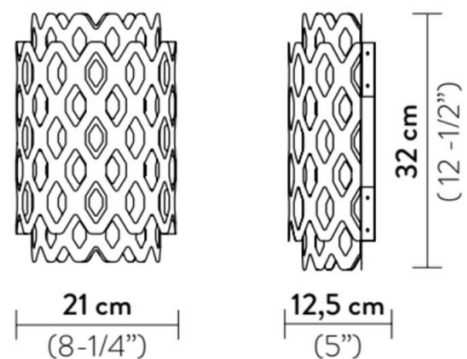
The Slamp Charlotte Wall Light is characterised by an extraordinary design and several layered lampshades hand crafted from Cristalflex® and Lentiflex® - patented materials by Slamp themselves. This Wall Lamp harbours a stylish design with a particularly striking outer lampshade, which boasts a honeycomb pattern, through which the light gently shines.

The designer duo Doriana and Massimiliano Fuksas have created a wall light with a delicate and elegant design that shows off your room in style. The reflective material of the light hides the light source, illuminating the hexagons that define this collection and turning light into multiplying shapes illuminating your walls.

**The Charlotte Wall Light has a double hanging system: with anchor points or with a frame to avoid drilling the wall.**

## PRODUCT SPECIFICATION

**Light Source:** 1 X Max 10W E27 LED Filament Dimmable (excluded)  
**IP Code:** 20  
**Dimming:** Dimmable via mains phase dimming.  
**Dimensions:** Height: 32cm  
 Width: 21cm  
 Depth: 12.5cm



**For all sales and technical enquiries, please contact:**

+44 (0)114 263 4266

[info@davidvillagelighting.co.uk](mailto:info@davidvillagelighting.co.uk)

[www.davidvillagelighting.co.uk](http://www.davidvillagelighting.co.uk)