



## Gubi Satellite Wall Lamp

LA10691

SOURCE: <https://www.davidvillagelighting.co.uk/product/gubi-satellite-wall-lamp/10000786>

### PRODUCT DESCRIPTION

**Designer:** Mathieu Matégot

### Satellite Wall Lamp by Mathieu Matégot



Every great product tells a great story and the Gubi Satellite Wall Lamp is no exception. Mathieu Matégot was a Hungarian designer and architect who was captured during the Second World War as a prisoner. He was then made to work in a metal accessories factory where his ideas for design still carried on. During this time in the factory, whilst bending and folding metal into new shapes, he created the Rigitulle technique that would later become a trademark in furniture design. Matégot escaped from being a prisoner and set on a mission to apply what he had learnt and show the world his inspiring ideas. For a decade and a half Matégot travelled the world in search of inspiration and set up production to apply Rigitulle to his designs. Through this, Matégot became world known. Rigitulle is the process of bending, folding and shaping metal tubing with perforated metal sheet creating curvaceous metal surfaces and shapes, resembling sheets of folded paper. It creates a transparent and weightless effect combined with a modern style, that is everlasting and timeless.

Last appearing in production seventy years ago, the Satellite Wall Lamp by Mathieu Matégot is back to make a statement once again continuing his story. The geometric lamp shades, where the famous Rigitulle technique takes hold, are available in Creamy White, Graphite Black or a combination of the two. These are then balanced on sculptural metal arms creating an abstract and modern staple. With Matégot's fascination of light and shadow, the wall lamps' effect of the light through the 'reinvented traditional lampshades' cast a mesmerising effect that is atmospheric, joyous and delivers something spectacular.

This daring design embodies a striking 'balloons on a string' image, a bold playful centre piece for residential, hospitality or corporate use. Either mounted on the wall or the ceiling, this timeless piece with an inspiring history is a delightful design you will value forever.

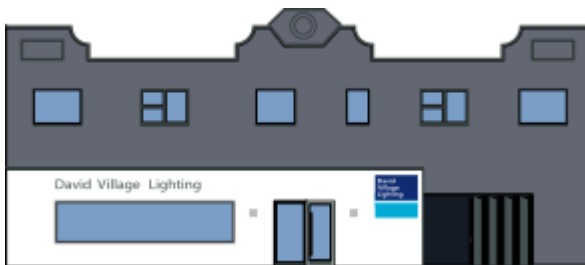
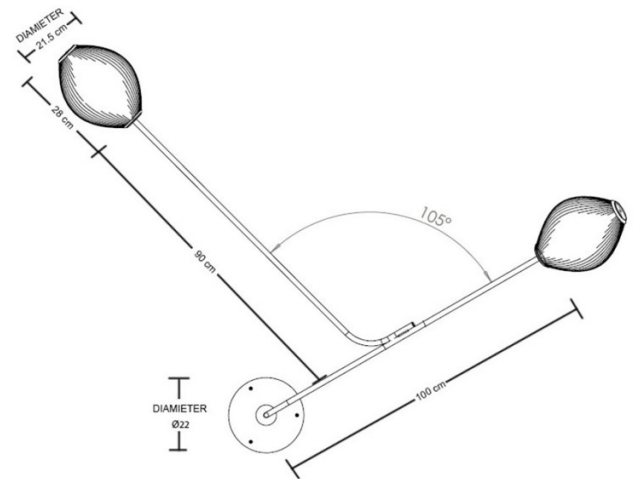
## PRODUCT SPECIFICATION

**Light Source:** 2 x max 5W E27 T30 LED (included)

**IP Code:** 20

**Dimming:** Dimmable via mains phase dimming.

**Dimensions:** 119cm height  
166cm width  
57.5cm depth  
Ø21.7 x 28 cm shade  
Ø22 wall mount  
100/90cm arm length



**For all sales and technical enquiries, please contact:**

+44 (0)114 263 4266

[info@davidvillagelighting.co.uk](mailto:info@davidvillagelighting.co.uk)

[www.davidvillagelighting.co.uk](http://www.davidvillagelighting.co.uk)