



Audo Copenhagen Collector Chandelier

LA10677

SOURCE: <https://www.davidvillagelighting.co.uk/product/Audo-Copenhagen-Collector-Chandelier/10000759>



PRODUCT DESCRIPTION

Designer: Alf Svensson

Audo Copenhagen Collector Chandelier

The Collector was envisioned by Alf Svensson, a Swedish furniture designer, in the 1950s. The chandeliers have an industrial look, while the muted colour and brass ring allow them to blend into any space. A stylish mid-century design, the Collector Chandelier is available in two sizes with 3 (61cm) or 5 (66.5 cm) shades. The shades disperse light upwards and downwards and the small perforations push light outwards, creating a stunning effect of light and shadows. The brass ring and creme shades perfectly complement each other, while a 4m cable means you can install the chandelier in both high and low-ceiling rooms. The Collector is a modern chandelier that works both as a functional and decorative lighting fixture.

PRODUCT SPECIFICATION

Light Source: 3: 6 x Max 35W GU10 (excluded)
5: 10 x Max 35W GU10 (excluded)

IP Code: 20

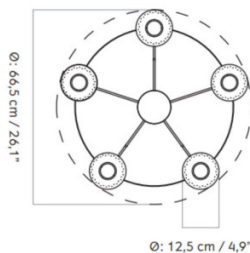
Dimming: Dimmable via mains phase dimming.

Dimensions: 3:
Ø61cm
Height: 25cm

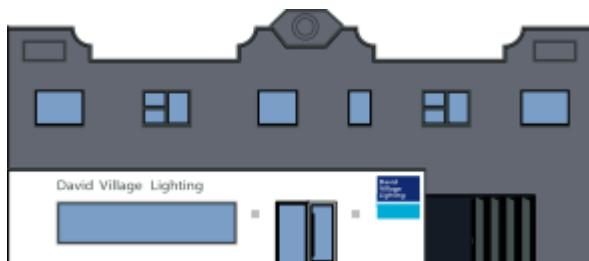
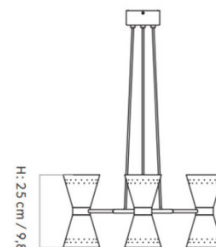
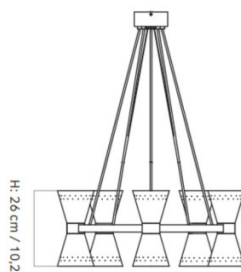
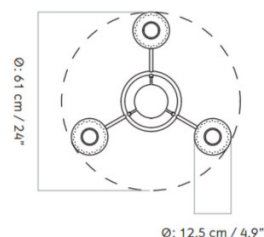
5:
Ø66.5cm
Height: 26cm

Individual Shade: Ø12.5cm
Ceiling Canopy: Ø11.5
Drop Height: 400cm

Collector 5



Collector 3



For all sales and technical enquiries, please contact:

+44 (0)114 263 4266

info@davidvillagelighting.co.uk

www.davidvillagelighting.co.uk