

FLOS

LA10676

Flos Luce Orizzontale LED Suspension

SOURCE: <https://www.davidvillagelighting.co.uk/product/Flos-Luce-Orizzontale-LED-Suspension/10000758>

PRODUCT DESCRIPTION

Designer: Ronan & Erwan Bouroullec

Flos Luce Orizzontale LED Suspension

This product is an Offline Only exclusive, available only to buy from selected authorised Flos dealers. Please [contact us](#) for pricing or to arrange an appointment to discuss this product in our [showroom](#).

A stunning linear luminaire by Flos, the Luce Orizzontale combines craftsmanship and cutting-edge technology. Originally made for a bespoke project, the concept behind this light was to design an interlocking modular suspension with tubular glass elements, suspending from the ceiling. The ambitious design, by Ronan & Erwan Bouroullec, is more than sculptural. Each size, S1, S2 and S3, is comprised of 8, 10 or 12 glass tubes, all supported by an aluminium bar. Two LED strips are inserted into the bar and are pushing the light upwards and downwards through the glass.

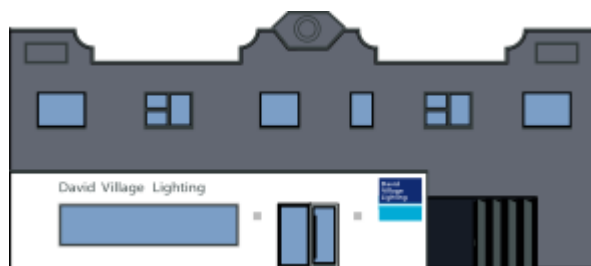
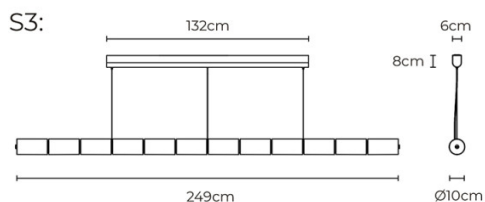
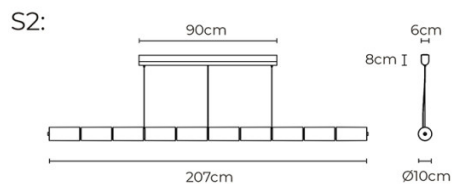
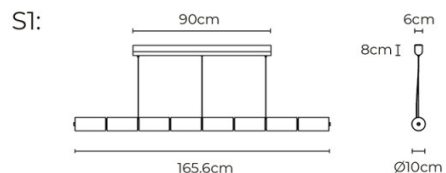
The Flos Luce Orizzontale can be dimmed by various methods; either use the dimmer located at one end of the bar, or you can additionally connect the suspension via Push-To-Make or DALI dimming systems. The LED Strips emit a powerful light from 100W up to 175W on the bigger size. Its length ranges from 165cm up to 240cm, the Luce Orizzontale suspension is bound to catch the eye in any space.

Please Note: The touch dimming on this product allows you to switch the light between uplight, downlight, and both uplight/downlight. If the suspension is wired to an on/off switch, then the touch control can also be used to dim the light up and down.



PRODUCT SPECIFICATION

Light Source:	S1: 100W, 2700K, 4500 Lumens S2: 145W, 2700K, 5750 Lumens S3: 165W, 2700K, 7000 Lumens
IP Code:	20
Dimming:	Direct Touch control dimming/Direct Touch control switching + push to make dimming control. Direct Touch control switching + DALI dimming control.
Dimensions:	<p>S1: Width: 165.6cm Ceiling Canopy: 90cm x 6cm x 8cm</p> <p>S2: Width: 207.2cm Ceiling Canopy: 90cm x 6cm x 8cm</p> <p>S3: Width: 248.8cm Ceiling Canopy: 132cm x 6cm x 8cm</p> <p>Glass Modules: Ø10cm Cable Length: 270cm</p>



For all sales and technical enquiries, please contact:

+44 (0)114 263 4266

info@davidvillagelighting.co.uk

www.davidvillagelighting.co.uk