

FLOS

Flos Skynest LED Suspension

LA10671

SOURCE: <https://www.davidvillagelighting.co.uk/product/flos-skynest-led-suspension/10000745>

PRODUCT DESCRIPTION

Designer: Marcel Wanders

Flos Skynest LED Suspension

Marcel Wanders Studio designed the Skynest, which blends elegance and technological innovation. The LED Strip is woven with a textile soft cable and creates this basket-like effect. Marcel Wanders Studio, commenting on the inspiration behind Skynest, said "Skynest is essentially woven light, an interpretation of craft processes: basket, fishing nets. It all started from these first inspirations and we started playing with these compositions. ".

The team had to experiment with various ways to enclose the LED Strip and maintain its sophisticated and artisanal balance. Eventually, they thought to wrap the strip in this sock-like containers made of recycled plastic. These "socks" are half-white and half-coloured and then intertwined to create this captivating kaleidoscopic effect. Skynest emits a 360 light casting no shadows in its surrounding; it's a perfectly balanced light.

Skynest gives off this handmade, artistic effect at first but it is also a technological light, made up of various different small inventions. A built-in balancing system at the top allows the product to stay in place and keeps it perfectly stable. As with all the latest releases from Flos, Skynest is fully recyclable and its parts are replaceable. You can easily remove and add a new LED strip yourself, which connects via a USB connection to the frame of the light. A super light product with an astonishing effect.

This product can be dimmed via Push, DALI, 0-10V or 1-10V dimming systems, depending on the installation you select. Skynest is available in 4 colours to choose from: brick red, almond, blue tourmaline and anthracite, and comes with a matching plastic ceiling rose.



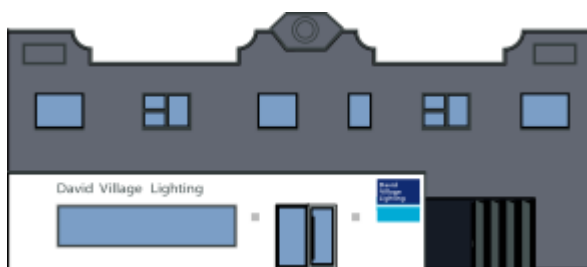
PRODUCT SPECIFICATION

Light Source: 78W, 2700K, 1944 lumens

IP Code: 20

Dimming: Dimmable via Push/DALI/1-10V/0-10V dimming systems. Please consult your electrician, additional wiring may be required on site.

Dimensions: Ø 90.4 cm
21.3 cm height
270cm drop height



For all sales and technical enquiries, please contact:

+44 (0)114 263 4266

info@davidvillagelighting.co.uk

www.davidvillagelighting.co.uk