



Astep VV Cinquanta Twin Wall Light

LA10651/TW

SOURCE: <https://www.davidvillagelighting.co.uk/product/Astep-VV-Cinquanta-Twin-Wall-Light/10000731>



PRODUCT DESCRIPTION

Designer: Vittoriano Viganò

VV Cinquanta Twin Wall Light by Astep

Created by Vittoriano Viganò, the designer first conceived of the Cinquanta design in 1951 whilst he was Art Director of the Arteluce lighting brand. The VV Cinquanta Twin wall lamp features a striking geometric pattern, formed from entwining two beautiful brass arms. The lampshades sit on the end, featuring a wide shape for an effective illumination.

The VV Cinquanta Twin wall light is available in either a black, black/brass or white/brass colour finish and has movable shades. The lampshades can move up and down and side to side so you can direct the light where needed. You could use one as a task light and one as an ambient light and then change this as the setting needs. A truly versatile wall light, this lamp will also add a touch of elegance to any interior.

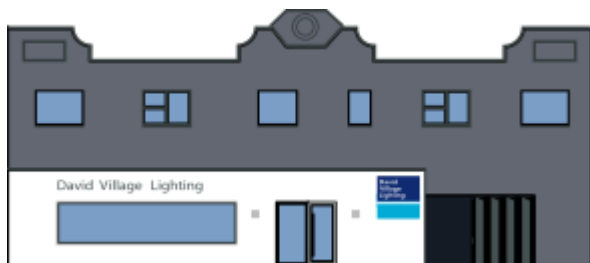
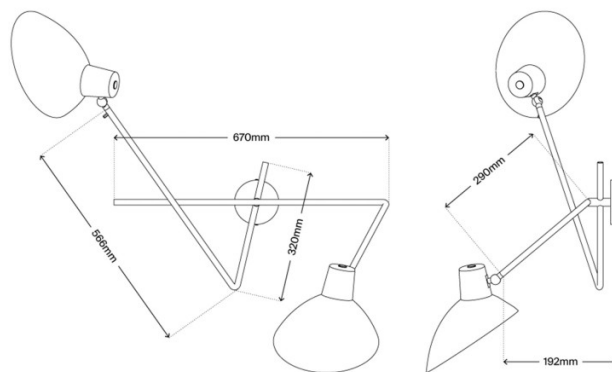
PRODUCT SPECIFICATION

Light Source: 2 x max 7W E27 LED (included)

IP Code: 20

Dimming: Dimmable via mains phase dimming

Dimensions: Ø27.4cm shade
113cm total width
53.8cm depth from wall
52.4cm height



For all sales and technical enquiries, please contact:

+44 (0)114 263 4266

info@davidvillagelighting.co.uk

www.davidvillagelighting.co.uk