



# Normann Copenhagen Klip Lamp

LA10650/L

SOURCE: <https://www.davidvillagelighting.co.uk/product/Normann-Copenhagen-Klip-Lamp/10000689>

## PRODUCT DESCRIPTION

Designer: Simon Legald

### Normann Copenhagen Klip Lamp

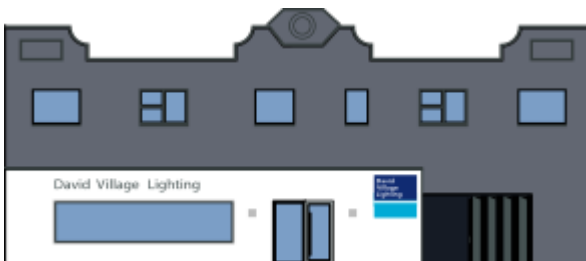
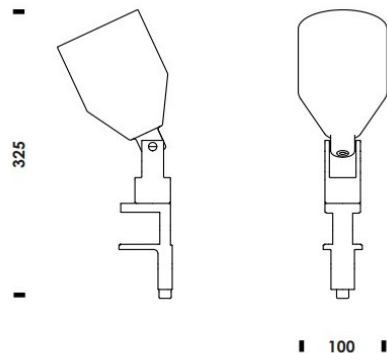
Designed with functionality in mind, characterised by its sharp and clean geometrical design cues the Klip is an adaptable design that can be used as multiple lighting solutions. The steel shade can be adjusted 360 degrees to direct the beam of light to wherever it is needed. The specially designed clamp element allows the user to attach this lamp to various items in their home. From a shelf to a table top or window sill, the Klip can be added to your interior with ease.

Available in four finishes, white, warm grey, green and black. This array of finishes can work with all kinds of styles and interiors. From the simple monochrome of the white and black finishes, to a natural calming interior with the warm grey, or add a modern pop of colour with the green finish.



## PRODUCT SPECIFICATION

- Light Source:** 1x Max 2W, E14 LED (Excluded)
- IP Code:** 20
- Dimming:** In line on/off switch included on the cable
- Dimensions:** Height: 32.5cm  
Width: 10cm  
Cable Length: 200cm



For all sales and technical enquiries, please contact:

+44 (0)114 263 4266

info@davidvillagelighting.co.uk

www.davidvillagelighting.co.uk