

mater

Mater Shade Pendant Light

LA10627

SOURCE: <https://www.davidvillagelighting.co.uk/product/Mater-Shade-Pendant-Light/10000640>



PRODUCT DESCRIPTION

Designer: Space Copenhagen

Mater Shade Pendant Light

The Mater Shade pendant was designed by Danish architect duo Space Copenhagen who place minimal Scandinavian design traditions at the forefront of their work. This is clear within the design of the Shade pendant that uses spun aluminium to form these classic dome silhouettes, a form seen commonly within Scandinavian design. The raw exposed metal featured within this pendant light demonstrates the beauty of natural materials and showcases the importance placed on materiality.

Available in a small (Ø40cm) and large (Ø60cm), this pendant light can be placed anywhere in the home where a contemporary lighting solution is needed. Placed above a dining table or in an entranceway, the Shade pendant brings an efficient and stunning light wherever it is placed.

PRODUCT SPECIFICATION

Light Source: 1 x max 6W E27 LED (excluded)

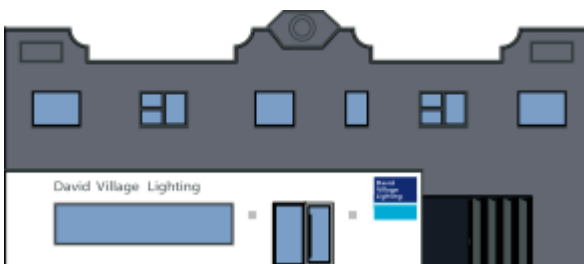
IP Code: 20

Dimming: Dimmable via mains phase dimming.

Dimensions: **Ø40cm:**
Ø40cm shade
20.5cm height

Ø60cm:
Ø60cm shade
30.5cm height

200cm cable length



For all sales and technical enquiries, please contact:

+44 (0)114 263 4266

info@davidvillagelighting.co.uk

www.davidvillagelighting.co.uk