



Design For The People Pure Pendant

LA10620

SOURCE: <https://www.davidvillagelighting.co.uk/product/Design-For-The-People-Pure-Pendant/10000626>



PRODUCT DESCRIPTION

Designer: Bønnelycke MDD

Design For The People Pure Pendant Light

Designed by Bønnelycke MDD, the Pure pendant was created to be a charismatic and delightful light, ensuring clean and sleek lines. Living up to its name, the Pure pendant light has an uncomplicated style and approach, being able to be applied in many settings. The lampshade is made out of metal, shaped into a smooth curved silhouette. The shade is then finished with a beautiful wooden top, made from FSC oiled walnut tree or FSC ash tree.

The pendant light comes in three subtle metal colour finishes, grey, white or black, to slip into any interior colour scheme. The pendant produces a downward directed light which is best used over tables and surfaces in kitchens, dining areas, lounges and more in homes, hospitality venues and public spaces.

PRODUCT SPECIFICATION

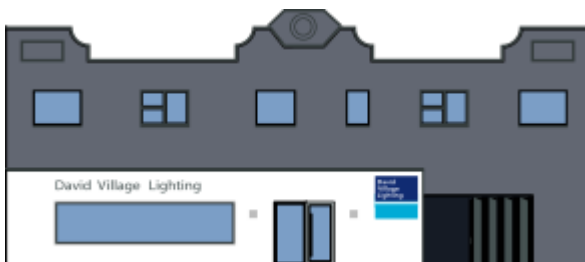
Light Source: 1 x Max 40W E27 (excluded)

IP Code: 20

Dimming: Dimmable via mains phase dimming

Dimensions: Ø20cm
Height: 35cm

Ceiling Canopy: Ø12cm
Ceiling Canopy Height: 9cm
Max Drop: 300cm



For all sales and technical enquiries, please contact:

+44 (0)114 263 4266

info@davidvillagelighting.co.uk

www.davidvillagelighting.co.uk