

nordlux®

# Nordlux Grant Pendant

LA10618

SOURCE: <https://www.davidvillagelighting.co.uk/product/Nordlux-Grant-Pendant/10000621>



## PRODUCT DESCRIPTION

### Grant Pendant Light by Nordlux

The Grant pendant combines contemporary design with classic ideals, made from a beautiful combination of glass and metal. The lampshade features a spherical glass orb, one of the latest trends in current lighting design. The shade is then finished with a brass fitting, adding a touch of elegance and grace to the pendant.

The Grant pendant lamp is available in three sizes, Grant 15, Grant 25 and Grant 35, and has an opal white finish which warms up as the light is turned on. The pendant light creates a soft and ambient glow which spreads out to provide both atmospheric and functional lighting. You can use alone, in rows, in clusters and you can also mix and match sizes to create a wonderful light display.

## PRODUCT SPECIFICATION

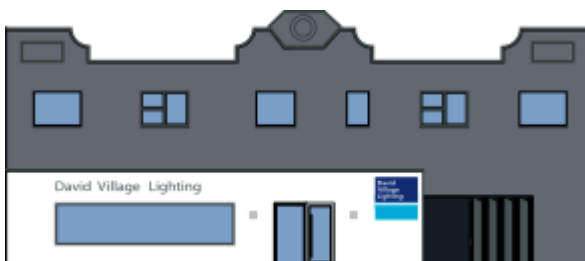
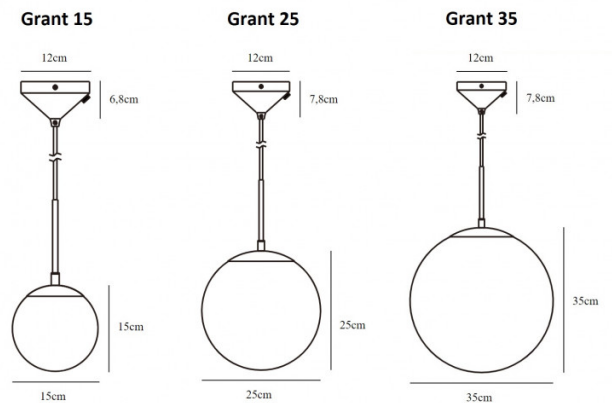
**Light Source:** Grant 15 - 1 x Max 15W E14 (excluded)  
Grant 25 - 1 x Max 25W E27 (excluded)  
Grant 35 - 1 x Max 25W E27 (excluded)

**IP Code:** 20

**Dimming:** Dimmable via mains phase dimming.

**Dimensions:** Grant 15 - Ø15cm, Height: 15cm  
Grant 25 - Ø25cm, Height: 25cm  
Grant 35 - Ø35cm, Height: 35cm

Ceiling Canopy: Ø12cm  
Cable Length: 200cm



For all sales and technical enquiries, please contact:

+44 (0)114 263 4266

[info@davidvillagelighting.co.uk](mailto:info@davidvillagelighting.co.uk)

[www.davidvillagelighting.co.uk](http://www.davidvillagelighting.co.uk)