



LA10595/SP

Bover Nans Sphere Outdoor LED Pendant

SOURCE: <https://www.davidvillagelighting.co.uk/product/Bover-Nans-Sphere-Outdoor-LED-Pendant/10000602>



PRODUCT DESCRIPTION

Designer: Joana Bover

Bover Nans Sphere Outdoor LED Pendant Light

Designed by Joana Bover, the Nans Sphere outdoor pendant is part of the [Bover Nans collection](#), a range inspired by the Cala Nans cove situated in Cadaquès, a natural and untamed place that is only accessible by sea or footpath. Bover embodies this organic wonder with a natural looking lampshade, made from woven synthetic fibre to create a truly Mediterranean style.

The Nans Sphere outdoor pendant lamp can be used in a wide variety of exteriors, having an evenly-spread and downward directed glow to create a warm ambience. The pendant comes in two colours, red or brown, and in two sizes so you can find the right look and size for your space.

PRODUCT SPECIFICATION

Light Source: Nans Sphere S/60: 14W, 2700K, 1400 Lumens
Nans Sphere S/80: 24W, 2700K, 2400 Lumens

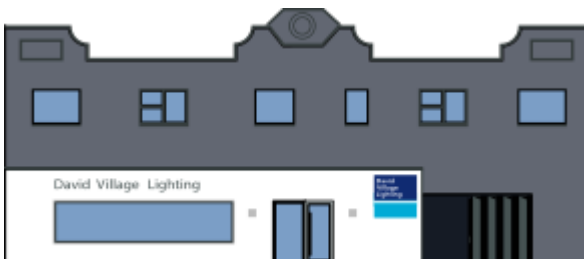
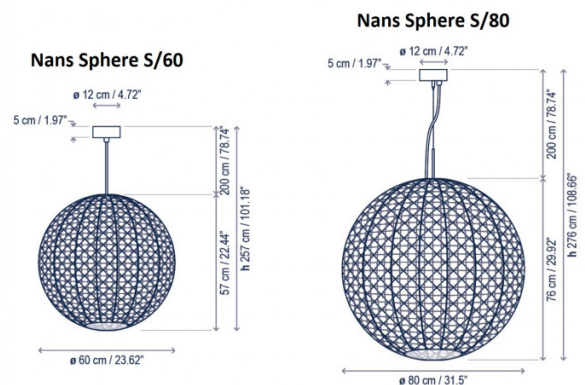
IP Code: 66

Dimming: Dimmable via Triac dimming.

Dimensions: Nans Sphere S/60
Ø60cm
Height: 57cm

Nans Sphere S/80
Ø80cm
Height: 76cm

Ceiling Canopy: Ø12cm
Cable Length: 200cm



For all sales and technical enquiries, please contact:

+44 (0)114 263 4266

info@davidvillagelighting.co.uk

www.davidvillagelighting.co.uk