

nordlux®

Nordlux Alton Pendant

LA10603

SOURCE: <https://www.davidvillagelighting.co.uk/product/Nordlux-Alton-Pendant/10000584>



PRODUCT DESCRIPTION

Alton Pendant Light by Nordlux

The Alton pendant lamp is a perfect example of elegant and refined expression, created from a smooth glass lampshade paired with a metal top. The glass is formed into a rounded form, providing a curvaceous and pleasing aesthetic for any interior.

The Alton pendant comes in either a smoked black or opal white glass shade and is available in three shapes/sizes, the Alton 23, Alton 25 or Alton 35. The pendant lamp in opal white provides a diffused glow that also directs downwards and the smoked black version exposes the light bulb for a more contemporary look and glow. Suitable for dining areas, kitchens, lounges, bedrooms and more, the Alton pendant light can be used alone or in multiple using rows or clusters.

Please note, two interchangeable metal tops in black and brass are included in the purchase of the opal white colour finish.

PRODUCT SPECIFICATION

Light Source: 1 x Max 60W E27 (excluded)

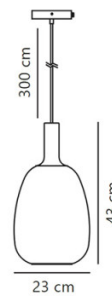
IP Code: 20

Dimming: Dimmable via mains phase dimming.

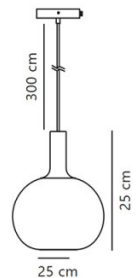
Dimensions: **Alton 23** - Ø23cm, Height: 43cm
Alton 25 - Ø25cm, Height: 25cm
Alton 35 - Ø35cm, Height: 30cm

Maximum Drop: 300cm

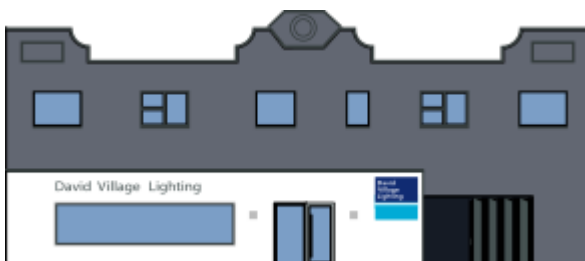
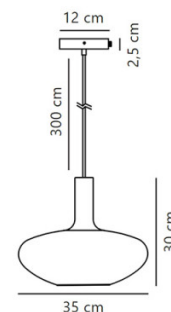
Alton 23



Alton 25



Alton 35



For all sales and technical enquiries, please contact:

+44 (0)114 263 4266

info@davidvillagelighting.co.uk

www.davidvillagelighting.co.uk