

LYFA

LYFA Peanut Pendant Light

LA10598

SOURCE: <https://www.davidvillagelighting.co.uk/product/LYFA-Peanut-Pendant-Light/10000574>



PRODUCT DESCRIPTION

Designer: Bent Karlby

LYFA Peanut Pendant Light

The Peanut pendant was designed by Bent Karlby who is widely regarded today as one of Denmark's most productive and versatile lighting designers of the 20th century. The Peanut design is comprised of three layers of opal glass that emits a soothing uniform and comforting light ideal for making a calming atmosphere. The contrast between the white opaline matte shade and the brass detailing enhances the quality of both materials whilst bringing luxury to your space.

Available in three sizes, which are 175, 250 and 400, the Peanut pendant by LYFA can suit any space in your home. Emitting a generous outpouring of diffused light, the Peanut can also be adjusted so that it can emit a direct downward light ideal for above a dining space or worktop. By removing the piece of glass placed at the bottom of the shade, you are able to reveal the light source and take advantage of the stunning direct downward light.

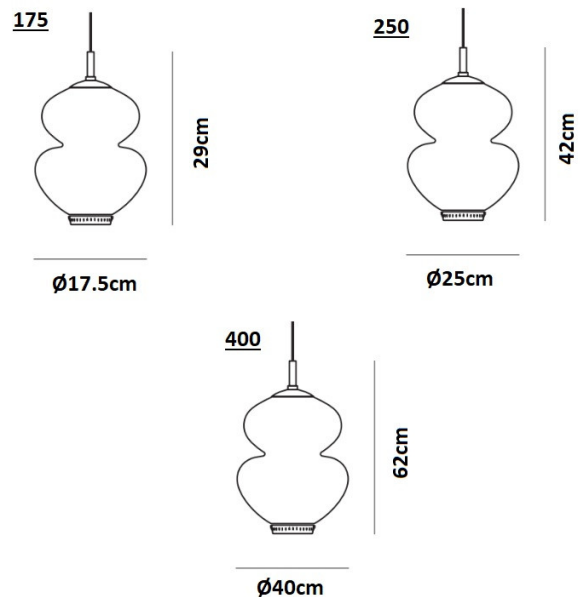
PRODUCT SPECIFICATION

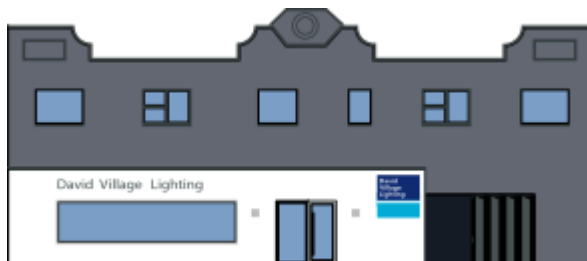
Light Source: **175:** 1 x max 40W E14
250: 1 x max 60W E27
400: 1 x max 60W E27 (excluded)

IP Code: 20

Dimming: Dimmable via mains phase dimming.

Dimensions: **175:** Ø17.5cm x 29cm
250: Ø25cm x 42cm
400: Ø40cm x 62cm





For all sales and technical enquiries, please contact:

+44 (0)114 263 4266

info@davidvillagelighting.co.uk

www.davidvillagelighting.co.uk