

**estiluz®**

LA10569/P

## Estiluz Bols LED Outdoor Pendant

SOURCE: <https://www.davidvillagelighting.co.uk/product/Estiluz-Bols-LED-Outdoor-Pendant/10000517>



### PRODUCT DESCRIPTION

**Designer:** Mermelada Estudio

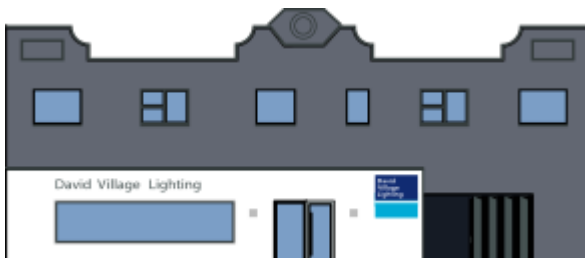
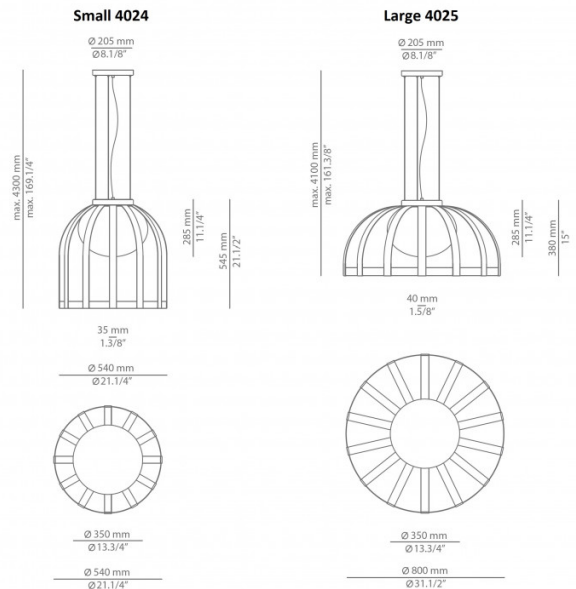
### Bols Outdoor LED Pendant Light by Estiluz

The Bols outdoor pendant was designed by Mermelada Estudio and is part of the [Estiluz Bols collection](#). The pendant light experiments with light and shadow as the light source shines through the metal shade to cast shadow lines in its surroundings. The LED light source is concealed and protected by a polyethylene diffuser which creates a warm, anti-glare glow.

The Bols outdoor pendant lamp is contemporary in nature. Suitable for outdoor use, the pendant can be utilised in a wide variety of settings, whether hung over a table on your patio or used as a stylish central light. Enjoy in homes, hospitality environments or commercial spaces for a modern and chic solution.

### PRODUCT SPECIFICATION

**Light Source:** 10W, 2700K, 870 Lumens  
**IP Code:** 65  
**Dimming:** Dimmable via Triac dimming.  
**Dimensions:** Shade: Ø80cm  
 Shade Height: 38cm  
 Ceiling Canopy: Ø20.5cm  
 Maximum Drop: 410cm



**For all sales and technical enquiries, please contact:**

+44 (0)114 263 4266

[info@davidvillagelighting.co.uk](mailto:info@davidvillagelighting.co.uk)

[www.davidvillagelighting.co.uk](http://www.davidvillagelighting.co.uk)