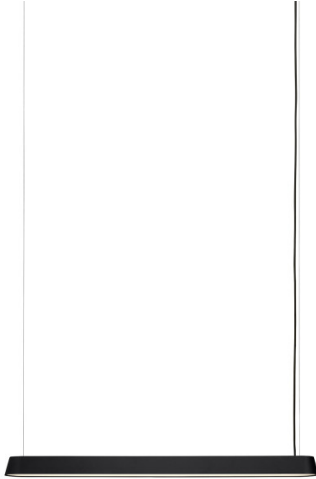


MUUTO**Muuto Linear LED Pendant****LA10498/P**SOURCE: <https://www.davidvillagelighting.co.uk/product/Muuto-Linear-LED-Pendant/10000468>**PRODUCT DESCRIPTION****Designer:** Thomas Bentzen**Linear LED Pendant Light by Muuto**

The Muuto Linear Pendant Light was designed by Thomas Bentzen and is the perfect choice for office and work spaces, as well as domestic settings. The pendant was created to produce a smaller atmosphere in large interiors, drawing people in together and creating pockets of light through an effective and warm illumination. The Linear pendant has clean and subtle lines, sitting calmly in the air for an inviting aesthetic.

The Linear pendant light is available in a small or large size and in two colours, black or grey, so you can choose the right fit and look for your space. Display over large tables, kitchen islands, meeting room tables and desks for a useful and direct glow. Also match with other lights from [Muuto's Linear System Series](#) for a consistent and practical lighting scheme.

PRODUCT SPECIFICATION

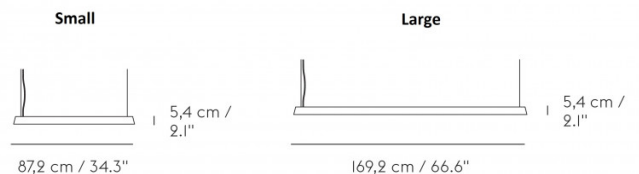
Light Source: **Small:** 20.3W, 3000K, 1060 Lumens
Large: 37.7W, 3000K, 1880 Lumens

IP Code: 20

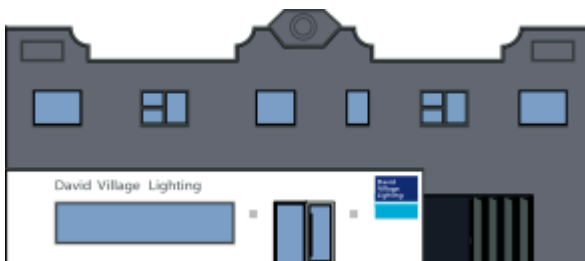
Dimming: Dimmable via mains phase dimming.

Dimensions: Small:
 Length: 87.2cm
 Depth: 10.7cm
 Height: 5.4cm
 Cable length: 400cm

Large:
 Length: 169.2cm
 Depth: 10.7cm
 Height: 5.4cm
 Cable length: 400cm



Ceiling cap
 Ø 9 x 5,6 cm / 3.5" x 2.2"



For all sales and technical enquiries, please contact:

+44 (0)114 263 4266

info@davidvillagelighting.co.uk

www.davidvillagelighting.co.uk