

pholc

Pholc Mobil 100 Pendant

LA10563/100

SOURCE: <https://www.davidvillagelighting.co.uk/product/Pholc-Mobil-100-Pendant/10000452>



PRODUCT DESCRIPTION

Designer: Monika Mulder

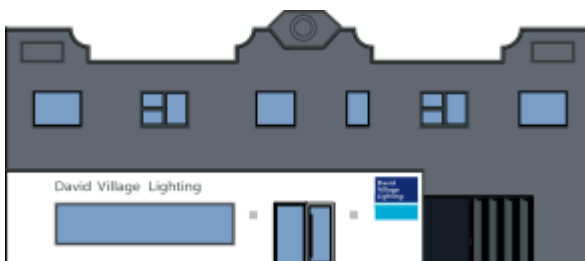
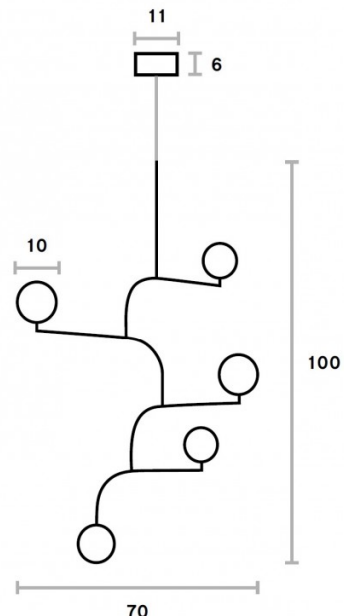
Mobil 100 Pendant Light by Pholc

Designed by Monika Mulder, the Mobil 100 pendant lamp is inspired by the round lights on the Brooklyn Bridge and the well-known black metal balconies in New York, as Mulder was asked to create a light that would look good in an NYC loft. This pendant light features five opal glass lampshades that are held by metal branches, with each one being movable so you can create a unique aesthetic.

Available in brushed brass, matt nickel or matt black, the Mobil 100 suspension creates a diffused glow that can act as a main or feature light, providing an effective and reaching illumination. Suitable for use in offices, homes or professional spaces, the Mobil 100 offers a modern look that contemporises a chandelier and will look elegant in any interior.

PRODUCT SPECIFICATION

Light Source: 5 x Max 20W G9 LED (excluded)
IP Code: 20
Dimming: Dimmable via mains phase dimming.
Dimensions: Shade: Ø10cm
 Width: 70cm
 Height: 100cm
 Ceiling Canopy: Ø11cm
 Cable Length: 300cm



For all sales and technical enquiries, please contact:

+44 (0)114 263 4266

info@davidvillagelighting.co.uk

www.davidvillagelighting.co.uk