

LE KLINT

# Le Klint Galaxy Pendant Light

LA10551

SOURCE: <https://www.davidvillagelighting.co.uk/product/Le-Klint-Galaxy-Pendant-Light/10000410>



## PRODUCT DESCRIPTION

**Designer:** Poul Christiansen

## Le Klint Galaxy Pendant Light

The Galaxy light by Le Klint was designed by acclaimed designer Poul Christiansen who has created several pendants for Le Klint. This Galaxy pendant uses the traditional pleated design that makes Le Klint so recognisable. The soft pleats over a curved shade are a feature of Poul Christiansen's designs as he gets his inspiration from places such as the Sydney Opera House.

This elegant design is available in two sizes, a small and a large. These size options give you the ability to fit the Galaxy anywhere in your home. Whether it be a statement light over a dining table or a small pendant in a cosy area of your home. The brass detailing at the top of the lampshade gives this simple design an elegant touch.

## PRODUCT SPECIFICATION

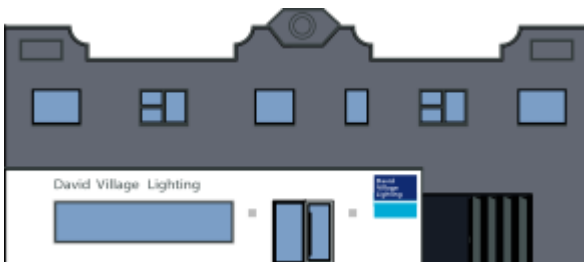
**Light Source:** 1 x max 20W E27 LED (excluded)

**IP Code:** 20

**Dimming:** Dimmable via mains phase dimming.

**Dimensions:** **Small:**  
Ø50cm  
25cm height

**Large:**  
Ø70cm  
27cm height



**For all sales and technical enquiries, please contact:**

+44 (0)114 263 4266

[info@davidvillagelighting.co.uk](mailto:info@davidvillagelighting.co.uk)

[www.davidvillagelighting.co.uk](http://www.davidvillagelighting.co.uk)