

m o o o i

LA9791/L

Moooi Heracleum III Linear LED Suspension

SOURCE: <https://www.davidvillagelighting.co.uk/product/Moooi-Heracleum-III-Linear-LED-Suspension/10000404>

PRODUCT DESCRIPTION

Designer: Bertjan Pot

Moooi Heracleum III Linear LED Suspension

The Moooi Heracleum III Linear was inspired by the Heracleum Plant that seasonally blooms and branches out creating a beautiful spectacle. This suspension light has frozen the Heracleum Plant in time allowing it to always be in bloom. This nature-inspired LED suspension light was designed by Bertjan Pot, a designer who uses his passion for nature and technology to create the Heracleum collection for Moooi. Bertjan Pot describes his design as *"For me, the Heracleum is a lot more about math than nature, but somebody else might use it because they're all about flowers. I always like it when there's more than one story about a product."*

As well as looking naturalistic and stunning, this light is also highly technical and uses new modern techniques to give you the best lighting it can. The 72 LED modules used in this Moooi suspension were carefully thought out and use a method called Electrosandwich, which was developed by Moooi's founder Marcel Wanders. This method allows for many LED lights to be lit simultaneously and allows for the LED blossoms to be as thin as possible to add to the elegance of the design and clean silhouette.

This Moooi suspension is also fitted with a brand new driver that gives you lots of dimming options so that you can pick the dimming method that suits you best. There are also three finishes to choose from, all of which create a stunning effect when paired with the ultra-thin and delicate LED blossoms. The nickel, copper, green and white colour finishes give you plenty of options for your interior. Ideal for over a dining table or office space.



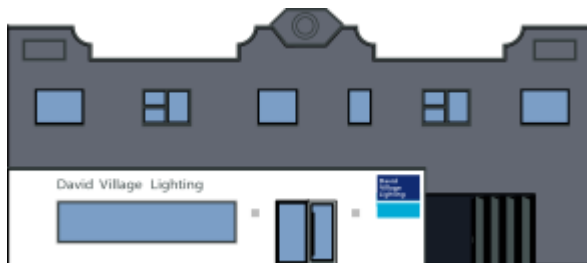
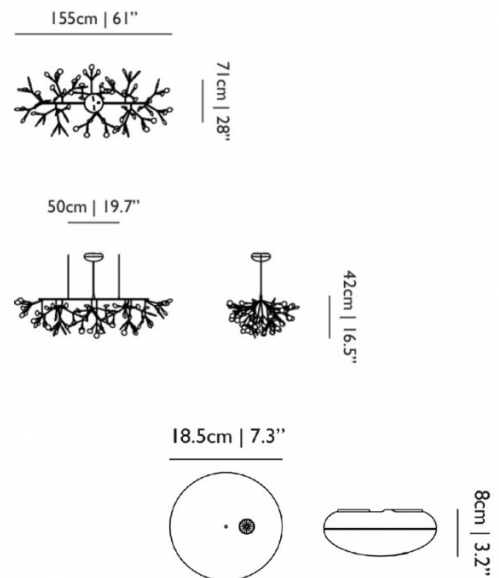
PRODUCT SPECIFICATION

Light Source: 22W, 2600K, 1872 Lumens

IP Code: 20

Dimming: Dimmable via Dali or Push to make dimming systems or via the Moooi Wireless Wall Switch (wall switch available to purchase separately upon request). Please consult your electrician, additional wiring may be required on-site.

Dimensions: Height: 42cm
Width: 155cm
Depth: 71cm
Ceiling Canopy: Ø18.5cm
Cable Length: 400cm



For all sales and technical enquiries, please contact:

+44 (0)114 263 4266

info@davidvillagelighting.co.uk

www.davidvillagelighting.co.uk