

BROKIS®

LA10480

Brokis Dome Nomad LED Portable Lamp

SOURCE: <https://www.davidvillagelighting.co.uk/product/Brokis-Dome-Nomad-LED-Portable-Lamp/10000253>

PRODUCT DESCRIPTION

Designer: Chiaramonte Marin

Brokis Dome Nomad LED Portable Outdoor Lamp



The Brokis Dome Nomad was designed by Chiaramonte Marin with the aim of replicating the iconic domes of Venice. The design of the shade gives the impression of eternity and the vastness of the celestial vault. The handblown shade is available in two variants: smooth clear glass or wavy clear glass. The smooth version creates a soft elegant look, whereas the wavy glass plays with light and creates a pattern of light and shadows. The shade is available in a range of finishes, all of which compliment the base colours well and keep the lamp understated and refined. The opal diffuser within the shade beautifully and delicately diffuses the light and therefore creates a soft ambient glow that will light up any area of the home.

Each shade has an IP of 44 and can withstand freezing temperatures. This durability is ensured by the master glassmakers who put each and every shade under scrutiny before they are blown into the mould. The shades sit delicately on top of the lamp base which is available in four finishes: brushed stainless steel, black matte, copper, and brass. The base houses the electronics and a magnetic charging connector that is used along with the USB 2 cable to charge the lamp. The rechargeable aspect and metal ring attached to the top of the glass dome both allow you to pick up and move this lamp to wherever you may need it. For example, on a terrace or balcony or even just a cosy corner of a room.

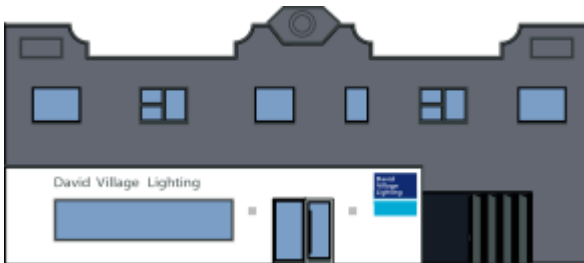
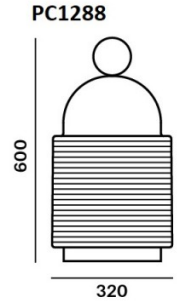
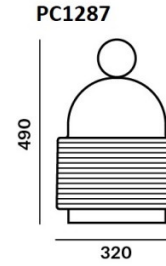
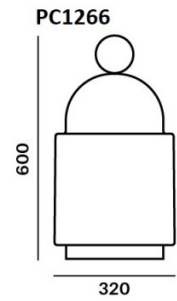
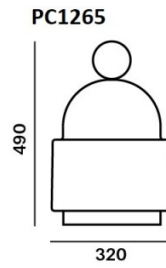
PRODUCT SPECIFICATION

Light Source: 4W, 2700K, 950 Lumens

IP Code: 44

Dimming: Integrated touch dimmer on the product.

Dimensions: **PC1265:** Width: 32cm x Height: 49cm
PC1266: Width 32cm x Height: 60cm



For all sales and technical enquiries, please contact:

+44 (0)114 263 4266

info@davidvillagelighting.co.uk

www.davidvillagelighting.co.uk