

**CLEARANCE  
OFFERS**

**LA10456**

## Kartell Ami Ami Chair CLEARANCE Ex-Display

SOURCE: <https://www.davidvillagelighting.co.uk/product/Kartell-Ami-Ami-Chair-CLEARANCE-Ex-Display/10000194>



### PRODUCT DESCRIPTION

**Designer:** Tokujin Yoshioka

### Ami Ami White Chair by Kartell

**Ex-display with signs of wear and tear, boxed in non-original packaging.**

**Please see images for exact condition.**

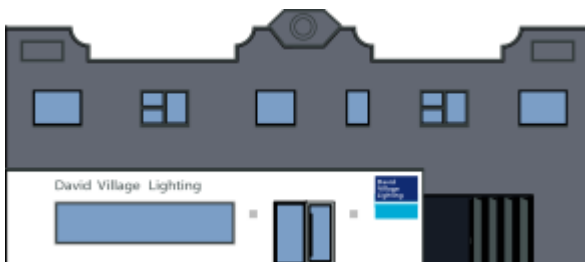
**1 x pack of two available**

Designed by Tokujin Yoshioka, the Ami Ami chair is inspired by Japanese weaving, producing a typical technique used on fabric with polycarbonate for a stylish and versatile seat. Suitable for indoor and outdoor use.

**Available only to purchase as a pack of two chairs**

### PRODUCT SPECIFICATION

**Dimensions:** 43cm width  
85cm height  
46cm leg height  
51cm depth



**For all sales and technical enquiries, please contact:**

+44 (0)114 263 4266

[info@davidvillagelighting.co.uk](mailto:info@davidvillagelighting.co.uk)

[www.davidvillagelighting.co.uk](http://www.davidvillagelighting.co.uk)