

Audo  
COPENHAGEN

LA10441

## Audo Copenhagen JWDA Portable Table Lamp

SOURCE: <https://www.davidvillagelighting.co.uk/product/Audo-Copenhagen-JWDA-Portable-Table-Lamp/10000135>

### PRODUCT DESCRIPTION

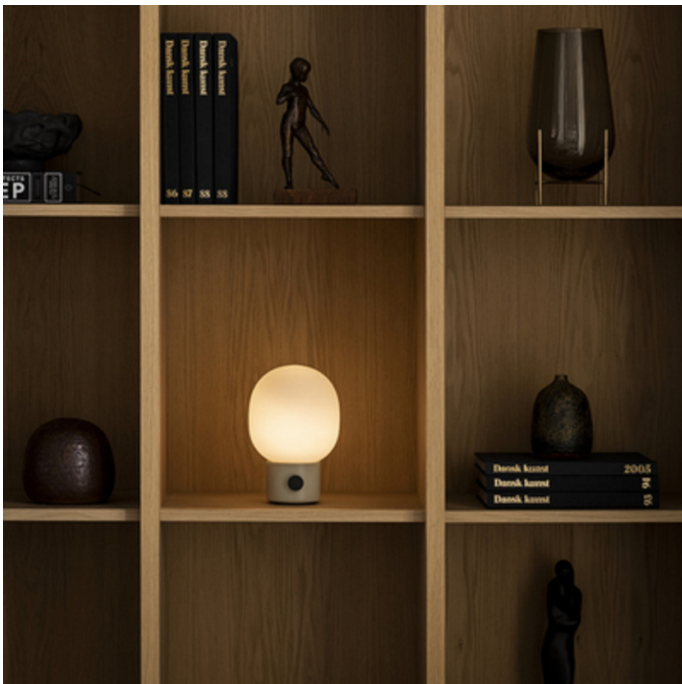
**Designer:** Jonas Wagell

### Audo Copenhagen JWDA Portable Table Lamp

The Audo Copenhagen JWDA Portable Table Lamp was designed with modern living in mind by balancing its functionality with its intriguing silhouette. This portable desk lamp uses its quirky, egg-shaped bulb to create a soft diffused light that transforms any space into a cosy nook. The illuminating light is dimmable through the integrated signature metal dimmer knob which creates not only an easy way to control the light in a room but also a striking design.

Swedish designer Jonas Wagell creates an interesting contrast between the delicate, rounded glass against the sturdy, bronzed brass base as he aims to create 'minimalist shapes with a welcoming expression'. The base is available in three classic colour finishes which are Black, Alabaster White and Dusty Green, all of which feature a contrasting dimmer knob.

Whilst maintaining its elegant design, the Audo Copenhagen JWDA Portable Table Lamp also provides a warming glow for up to 10 hours when fully charged. The light charges through a concealed magnetic connector in the base which is an example of how sleek the minimalist design is. Audo Copenhagen describe their designs as 'each piece is produced with the assumption that it will get plenty of use'. This is clearly seen within the design of the JWDA Portable Table Lamp as it not only provides a simplistic striking look but also the freedom of flexibility as its portability allows the light to travel around a space with ease.



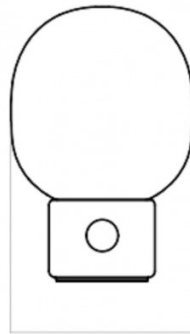
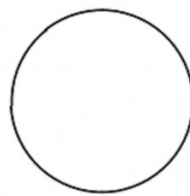
## PRODUCT SPECIFICATION

**Light Source:** 1 x Max 1.5W G4 (included)

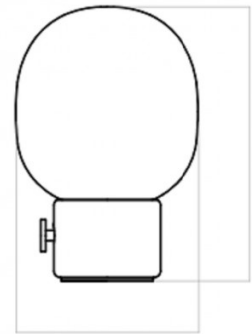
**IP Code:** 20

**Dimming:** Integrated dimmer on the product.

**Dimensions:** Ø14.5cm  
Height: 21.5cm  
Width: 14.5cm  
Cable Length: 80cm

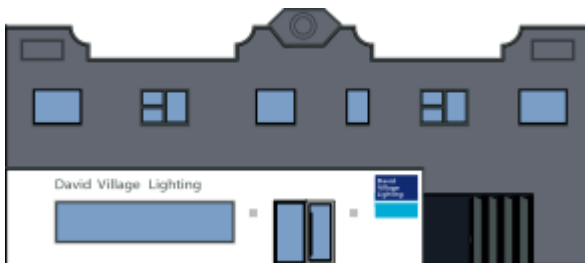


W: 14,5 cm / 5,7"



D: 14,5 cm / 5,7"

H: 21,5 cm / 8,5"



**For all sales and technical enquiries, please contact:**

+44 (0)114 263 4266

[info@davidvillagelighting.co.uk](mailto:info@davidvillagelighting.co.uk)

[www.davidvillagelighting.co.uk](http://www.davidvillagelighting.co.uk)