

.LIGHT ATTACK.

## Light Attack IONA - Driver

LA2042

SOURCE: <https://www.davidvillagelighting.co.uk/product/Light-Attack-IONA---Driver/9464>



350mA constant current LED Driver

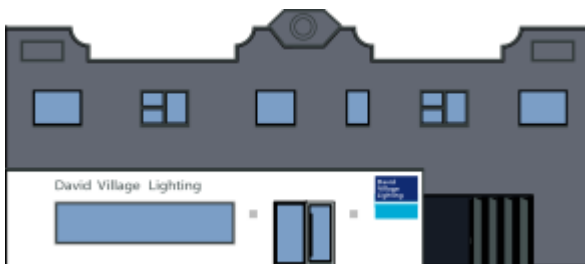
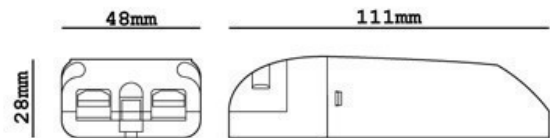
- Input: 110-240v ~ 50..60Hz 0.14A max.
- Output: 350mA 35V cc 1-9watt Max.
- Material: Plastic housing
- Secondary Wiring: series
- Protection against: Mains surge, Short circuit & over heating
- Energy rating 'A'
- Mains loop in loop out terminals
- Weight: 0.10kg

### PRODUCT DESCRIPTION

Driver for IONA LA2041 fitting - must be wired in series

See link below to LA2041 IONA fitting

### PRODUCT SPECIFICATION



For all sales and technical enquiries, please contact:

+44 (0)114 263 4266

[info@davidvillagelighting.co.uk](mailto:info@davidvillagelighting.co.uk)

[www.davidvillagelighting.co.uk](http://www.davidvillagelighting.co.uk)