

louis poulsen

LA8583

Louis Poulsen AJ Eklipta LED Wall/Ceiling Light

SOURCE: <https://www.davidvillagelighting.co.uk/product/Louis-Poulsen-AJ-Eklipta-LED-WallCeiling-Light/5862>

PRODUCT DESCRIPTION

Designer: Arne Jacobsen

AJ Eklipta LED Ceiling/Wall Light by Louis Poulsen

The AJ Eklipta LED wall and ceiling light was first designed by the renowned Arne Jacobsen in 1959 for the Rødovre Town Hall which Jacobsen also designed. The ceiling/wall light is made from a metal structure and an opal glass diffuser which emits a soft and diffused light that welcoming and inviting. The AJ Eklipta has a simple and clean round design making it versatile and suitable for many spaces to provide much needed illumination.

The AJ Eklipta LED light is available in 3 sizes, the larger Ø350 and Ø450 which were used in the town hall and the smaller Ø220 which was later designed by Jacobsen for St. Catherine's College at Oxford University. This wall/ceiling lamp has an integrated LED light source, making it long-lasting and eco-friendly. Suitable for both domestic use and architectural projects, this light can be used in many interiors to add a classic and iconic touch and to provide an effective glow.

This light is available in a retrofit lightbulb version. Please [click here](#) for more information.



PRODUCT SPECIFICATION

Light 220 - 7.6W, 3000K, 334 Lumens
Source: 350 - 8.8W, 3000K, 657 Lumens
450 - 23W, 3000K, 1770 Lumens

IP Code: 20

Dimming: Ø220 - Dimmable via mains phase dimming.

Ø350/Ø450 - Dimmable via Dali dimming systems.

Please consult your electrician, additional wiring may be required on site

Dimensions: 220:

Ø22cm

Depth: 10.5cm

Ceiling/Wall Mount: Ø8.3cm

350:

Ø35cm

Depth: 10cm

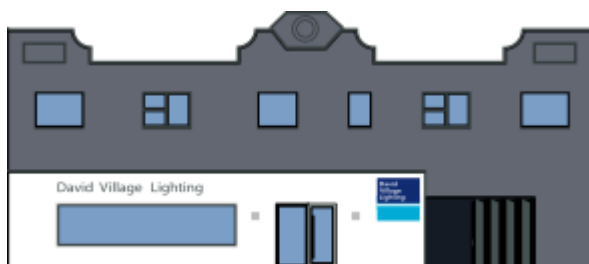
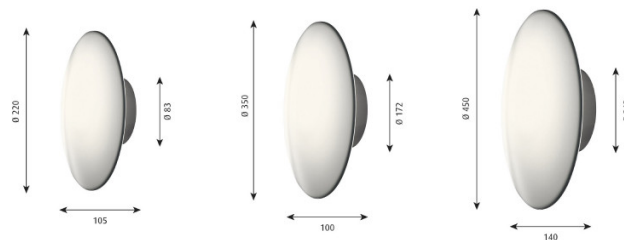
Ceiling/Wall Mount: Ø17.2cm

450:

Ø45cm

Depth: 14cm

Ceiling/Wall Mount: Ø21.2cm



For all sales and technical enquiries, please contact:

+44 (0)114 263 4266

info@davidvillagelighting.co.uk

www.davidvillagelighting.co.uk