

# FOSCARINI

## Foscarini Gregg Pendant

LA8308

SOURCE: <https://www.davidvillagelighting.co.uk/product/foscarini-gregg-pendant/4988>



### PRODUCT DESCRIPTION

**Designer:** Ludovica & Roberto Palomba

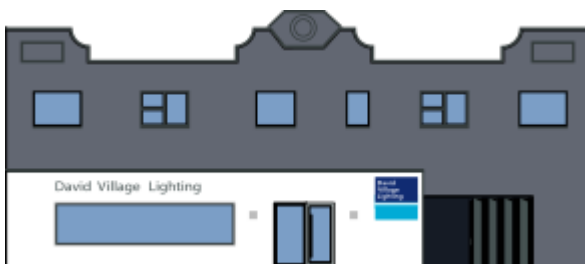
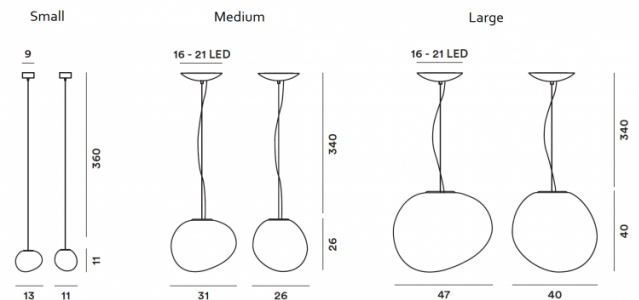
With its organic shape, the Gregg pendant light easily blends in with its surrounding yet becomes a luminous presence and draws all attention when lit. Designed by Ludovica and Roberto Palomba, this light has a beautiful glass shade that diffuses the light to create a warm, far-reaching glow that will illuminate the room. With the ability to also dim the light you can create the exact ambience you want in your space.

Suitable for many types of settings in professional and home interiors, the Gregg pendant is available in three sizes to find the right fit for you, whether you want to light a big dining room or a small bedroom. This pendant is both stunning and refined and will add a chic touch to the room.

The Gregg can be clustered using the Foscarini Gregg Multiple Composition, click [here](#) to find out more.

### PRODUCT SPECIFICATION

<b>Light Source:</b>	Small - 1 x G9 33W max (excluded)
	Medium - 1 x E27 LED 21W max, 2700k, 2500 lumens (included by Foscarini)
	Large - 1 x E27 LED 21W max, 2700k, 2500 lumens (included by Foscarini)
<b>IP Code:</b>	20
<b>Dimming:</b>	Dimmable via Triac dimming.
<b>Dimensions:</b>	Small - 13cm x 11cm x 11cm
	Medium - 31cm x 26cm x 26cm
	Large - 47cm x 40cm x 40cm



**For all sales and technical enquiries, please contact:**

+44 (0)114 263 4266

[info@davidvillagelighting.co.uk](mailto:info@davidvillagelighting.co.uk)

[www.davidvillagelighting.co.uk](http://www.davidvillagelighting.co.uk)