

innermost

Innermost Chelsea Pendant

LA10386

SOURCE: <https://www.davidvillagelighting.co.uk/product/Innermost-Chelsea-Pendant/21526>



PRODUCT DESCRIPTION

Chelsea Pendant Light by Innermost

Designed by James Bartlett, the Chelsea pendant light has a silhouette that is reminiscent of a turned-over teacup with the collection named after the traditional teaware known as Chelsea. The pendant lamp is made from spun aluminium, available with a white or black exterior matched with a gold interior.

The Chelsea pendant lamp is available in 3 sizes, the Chelsea 18, Chelsea 40 and the Chelsea 56, with each one being a functional and useful light. The pendant emits a downward-directed glow which is soft and ambient so works best hung over tables, with the larger sizes being helpful as a main light in your interior. Mix and match sizes and colours to create variety or use singularly for a more minimalist look in smaller rooms.

Please Note: The interior of the Chelsea Pendants is RAL 1036 with a semi-gloss finish.

PRODUCT SPECIFICATION

Light Source: 1 x max 100W E27 (excluded)

Dimming: Dimmable via mains phase dimming

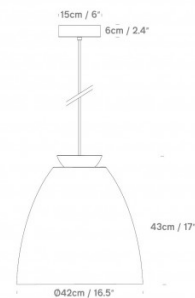
Dimensions: **Chelsea 18** - Ø18cm, H 21.5cm
Chelsea 40 - Ø42cm, H 43cm
Chelsea 56 - Ø56cm, H 21.5cm

Ø15cm ceiling canopy
 4m cable length

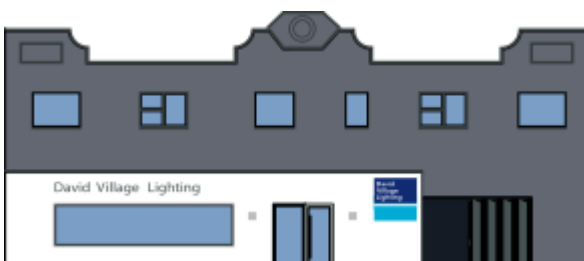
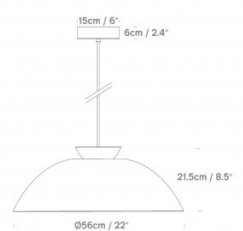
Chelsea 18



Chelsea 40



Chelsea 56



For all sales and technical enquiries, please contact:

+44 (0)114 263 4266

info@davidvillagelighting.co.uk

www.davidvillagelighting.co.uk