

NORR11

NORR11 Deco Chandelier

LA10187

SOURCE: <https://www.davidvillagelighting.co.uk/product/NORR11-Deco-Chandelier/20576>



PRODUCT DESCRIPTION

Designer: Kristian Sofus Hansen & Tommy Hyldahl

Deco Chandelier Light by NORR11

The Deco chandelier was designed by Kristian Sofus Hansen and Tommy Hyldahl exclusively for NORR11. Known for its minimalist and sleek design aesthetic, the Deco chandelier light is inspired by the tubular wall lights often seen in 1930s hotels during the Art Deco movement.

Constructed from six cylindrical opal glass shades, the chandelier is distinguished by its opening up to the ceiling, creating an intriguing and eye-catching shape. Each opal lampshade also has ridges, meaning the light has a shimmering effect. The light is diffused but is still bright, perfect as a decorative and ambient light. This chandelier light can be used in many spaces and is certainly a show-stopping light that will amaze all that see it. Buy multiple to create a real impact and match with other lights from the [NORR11 Deco collection](#) to have a room inspired by Art Deco lighting.

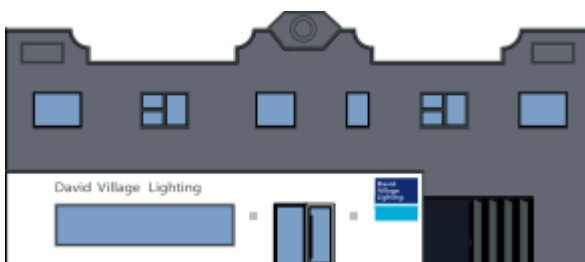
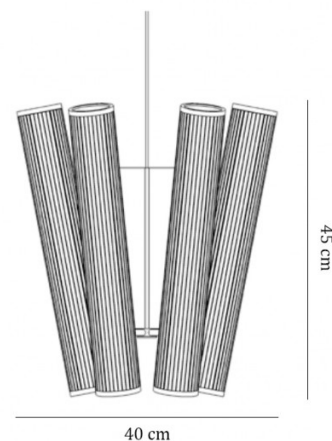
PRODUCT SPECIFICATION

Light Source: 12 x Max 15W E14 (excluded)

IP Code: 20

Dimming: Dimmable via mains phase dimming.

Dimensions: Height: 45cm
Width: 40cm
Cable Length: 400cm



For all sales and technical enquiries, please contact:

+44 (0)114 263 4266

info@davidvillagelighting.co.uk

www.davidvillagelighting.co.uk