

NEMO

LA10095/W2

Nemo Lighting Tubes 2 LED Wall Light

SOURCE: <https://www.davidvillagelighting.co.uk/product/Nemo-Lighting-Tubes-2-LED-Wall-Light/20353>



PRODUCT DESCRIPTION

Designer: Charles Kalpakian

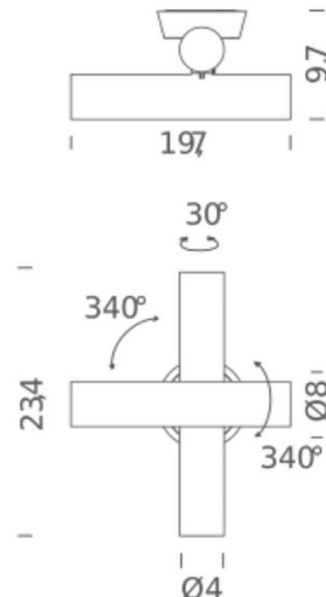
Nemo Lighting Tubes 2 LED Wall Light

An adjustable, almost sculptural wall light, Tubes 2 was designed by Charles Kalpakian for Nemo. Part of the Tubes collection, which includes wall, pendant and ceiling lights, the fitting offers a warm directional light.

The light is formed by two extruded aluminium cylinders, one overlapping the other and both can be rotated and adjusted independently up to 340°. Tubes 2 is suitable for use as a bedside light, in hallways, any professional settings or in hospitality as the Tubes 2 adds a warm glow.

PRODUCT SPECIFICATION

Light Source:	2 x 4W, 2700K, 190 Lumens
IP Code:	20
Dimming:	Dimmable via Triac or integrated dimmer on product.
Dimensions:	Height: 23.4cm Depth: 9.7 cm Width: 19.7cm



For all sales and technical enquiries, please contact:

+44 (0)114 263 4266

info@davidvillagelighting.co.uk

www.davidvillagelighting.co.uk