

m o o o i

LA6069

## Moooi Iconic Eyes LED Suspension

SOURCE: <https://www.davidvillagelighting.co.uk/product/moooi-iconic-eyes-led-suspension/20178>

### PRODUCT DESCRIPTION

**Designer:** Bernhard Dessecker

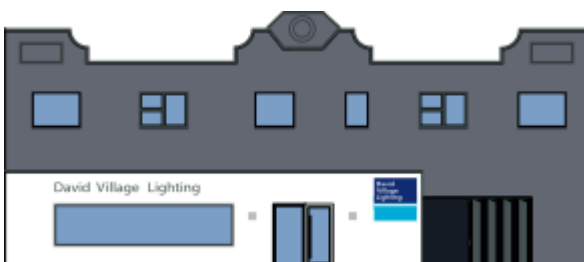
### Iconic Eyes by Moooi

The Iconic Eyes chandelier was first created in collaboration with BMW in 2014. It was automotive headlights that inspired the designer, Bernhard Dessecker, to create this light. Initially, the Iconic Eyes were designed to be installed in the foyer of the Bavarian National Museum (Germany). The headlights were to undergo transformation, to be fitted onto the oval shaped body of the light and create a constellation of lights. An interesting detail is that the 'eyes' are actually the BMW Mini headlights, a characteristic feature of the automotive company.

The iconic chandeliers emit an ambient and even glow, through the specially adapted head lights and LED rings around them. Iconic Eyes are available in two models, Iconic Eyes 85 and Iconic Eyes 161. The figure at the end reflects the number of lenses present in each piece. The black and chrome details of this light further enhance its stunning appearance. The Iconic Eyes are the perfect choice of lighting for both residential and commercial spaces; especially in large rooms, the pendants will instantly draw the viewers attention and will elicit instant responses.

### PRODUCT SPECIFICATION

<b>Light Source:</b>	<b>Iconic Eyes 161</b> - 220W, 2700K, 7000 Lumens <b>Iconic Eyes 85</b> - 110W, 2700K, 3700 Lumens
<b>IP Code:</b>	20
<b>Dimming:</b>	Dimmable via 1-10V dimming systems. Please consult your electrician, additional wiring may be required on site.
<b>Dimensions:</b>	<b>Iconic Eyes 161</b> - Height: 119cm , Width: 77cm <b>Iconic Eyes 85</b> - Height: 88cm, Width: 60cm



**For all sales and technical enquiries, please contact:**

+44 (0)114 263 4266

[info@davidvillagelighting.co.uk](mailto:info@davidvillagelighting.co.uk)

[www.davidvillagelighting.co.uk](http://www.davidvillagelighting.co.uk)