



LA10182

Warm Nordic Opal Shade Pendant

SOURCE: <https://www.davidvillagelighting.co.uk/product/Warm-Nordic-Opal-Shade-Pendant/20103>



PRODUCT DESCRIPTION

Designer: Svend Aage Holm-Sørensen

Opal Shade Pendant Light by Warm Nordic

The Opal Shade pendant was originally designed in the 1950s by Danish designer, Svend Aage Holm-Sørensen. A warm glow of diffused light is emitted from the pendant due to the designer's choice of opal glass. The opal glass diffuser is framed with wide metal shade, edged with small grooves - the designer's signature feature. These small grooves create an elegant light effect. The design is completed with sophisticated solid brass details.

The Opal Shade pendant makes a beautiful feature above the dining table or kitchen island, in the hallway or any room in your home which craves a feature.

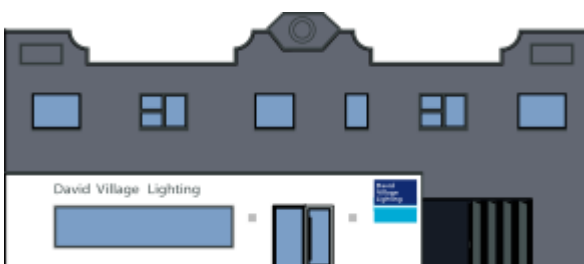
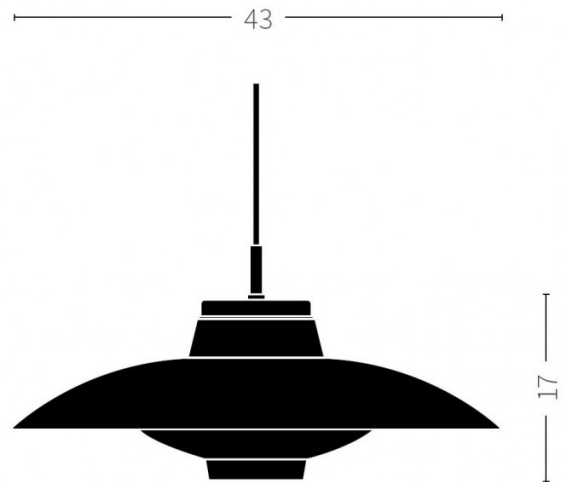
PRODUCT SPECIFICATION

Light Source: 1 x E27 25W max (excluded)

IP Code: 20

Dimming: Non-dimmable

Dimensions: Ø43cm
17cm height



For all sales and technical enquiries, please contact:

+44 (0)114 263 4266

info@davidvillagelighting.co.uk

www.davidvillagelighting.co.uk