



Warm Nordic Bloom Pendant

LA6002

SOURCE: <https://www.davidvillagelighting.co.uk/product/Warm-Nordic-Bloom-Pendant/20092>



PRODUCT DESCRIPTION

Designer: Svend Aage Holm-Sørensen

Bloom Pendant by Warm Nordic

The Bloom pendant was originally designed by Svend Aage Holm-Sørensen in the 1950s, and has been brought back to life by Warm Nordic due to its timeless style and design.

Bloom Pendant is made from a conical metal shade with brass ring detail, providing direct downward light. It's suitable for hanging above your dining table or kitchen island or basically in any room that calls for designer lighting.

The pendant is available in black or white, or in a striped more playful version of a black shade with white stripes.

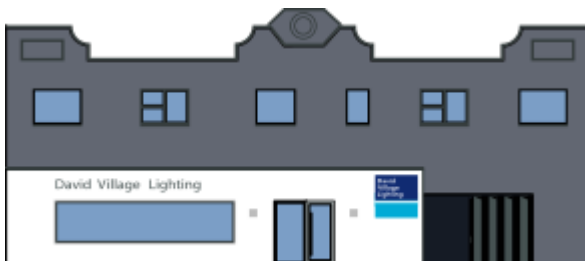
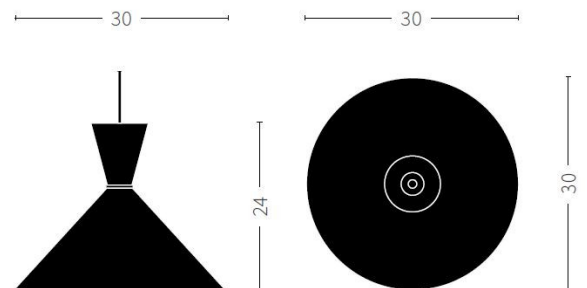
PRODUCT SPECIFICATION

Light Source: 1 x E27 25W max (excluded)

IP Code: 20

Dimming: Dimmable via mains phase dimming

Dimensions: Ø30cm
24cm height



For all sales and technical enquiries, please contact:

+44 (0)114 263 4266

info@davidvillagelighting.co.uk

www.davidvillagelighting.co.uk