

Artemide

LA5627/APP

Artemide Calipso LED Suspension App compatible

SOURCE: <https://www.davidvillagelighting.co.uk/product/artemide-calipso-led-suspension-app-compatible/19911>



PRODUCT DESCRIPTION

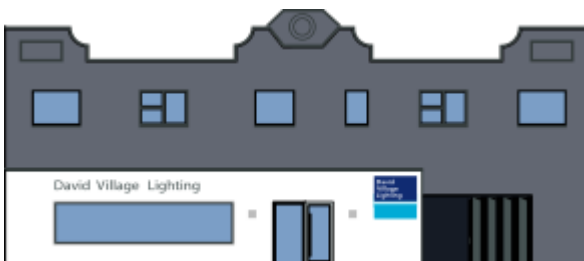
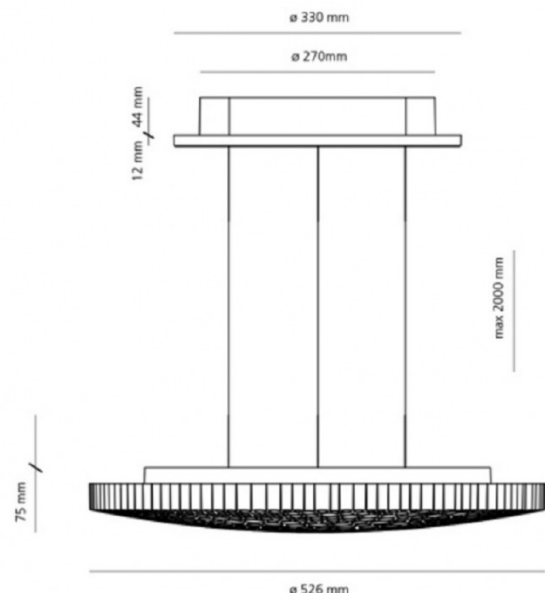
Designer: Neil Poulton

Artemide Calipso Suspension App compatible

Neil Poulton is the designer behind the Calipso collection. Neil is best known for creating 'deceptively simple-looking mass-produced objects' while his designs have won several design awards. Calipso was created by using an image of the moon and feeding it into a complex algorithm. The honeycomb surface is formed by various thin tube sections of different diameters, all together making up a perfect circle. Calipso is a true example of aesthetics and optical intelligence. The light, apart from being an emotional lighting object, it emits an evenly distributed, soft light. The Calipso suspension is suitable for both professional and private settings, and you can select a colour temperature of either 2700K or 3000K. The Calipso App Compatible can be controlled via the Artemide App, where you can adjust the light intensity using your phone or tablet.

PRODUCT SPECIFICATION

Light Source:	55W, 2700K, 2884lumens or 55W, 3000K, 2884lumens
IP Code:	20
Dimming:	Dimmable via Artemide app. Dimmable via Push to make/ switch dimming, dimmable using push to make switches. Please consult your electrician, additional wiring may be required on site.
Dimensions:	<p>Ø 52.6 cm</p> <p>5.6 cm depth</p> <p>180 cm max cord length</p> <p>Ø 25 cm ceiling rose</p>



For all sales and technical enquiries, please contact:

+44 (0)114 263 4266

info@davidvillagelighting.co.uk

www.davidvillagelighting.co.uk