

**vitra.**

## Vitra Akari 3A Lamp

LA5895/3A

SOURCE: <https://www.davidvillagelighting.co.uk/product/Vitra-Akari-3A-Lamp/19851>



### PRODUCT DESCRIPTION

**Designer:** Isamu Noguchi

### Vitra Akari 3A Lamp

The Akari 3A Lamp is part of the Akari Light Sculptures collection and was designed by Isamu Noguchi in 1951. This handcrafted, Japanese inspired light has a stunning mid-century feel and an unusual silhouette. The Akari 3A is much like the Akari 3AD, with similar dimensions and form, but differentiating with its simple white shade. Each 3A is handcrafted in the Ozeki workshop in Gifu and finished with a sun and moon logo, guaranteeing authenticity to the owner and resembling their Japanese heritage.

The 3A Lamp is a stunning piece that optimises traditional washi paper and a steel base to create a perfect equilibrium between practicality and ambience. The Japanese word "Akari" is translated to "light", a link to the goal of the entire collection, as the whole collection can be characterised by every light's weightless luminosity.

**This light needs to be installed near a socket as it comes with a cable and plug.**

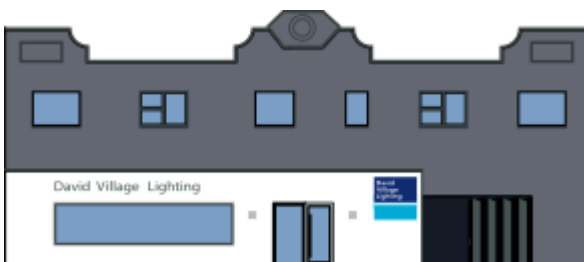
### PRODUCT SPECIFICATION

**Light Source:** 1 x 4W E27 LED

**IP Code:** 20

**Dimming:** In line on/off switch included on cable.

**Dimensions:** 56cm height  
28cm width



**For all sales and technical enquiries, please contact:**

+44 (0)114 263 4266

[info@davidvillagelighting.co.uk](mailto:info@davidvillagelighting.co.uk)

[www.davidvillagelighting.co.uk](http://www.davidvillagelighting.co.uk)