

Northern Northern Reveal LED Pendant

LA5878

SOURCE: <https://www.davidvillagelighting.co.uk/product/Northern-Reveal-LED-Pendant/19834>



PRODUCT DESCRIPTION

Northern Reveal Pendant

Reveal's smooth curves and unembellished surfaces are hallmarks of Scandinavian design, and they connect to glassblowing traditions around the world. We've enlisted master craftsmen to transform molten glass into perfect, hollow spheres, making each one of Reveal's shades unique. The designer fused contemporary style and traditional craftsmanship, while also finding expression for elegance and simplicity. The light was pared down to the essentials to create a new relationship between structure, shade and light source.

The shade is held in place by the LED light tube inside it, which is poised in a vertical position to hold it securely overhead. Reveal's subtle tones reflect the pale colours of the Nordic dawn and the shimmering light found at the Norwegian coast. Available in 2 sizes, small or large.

PRODUCT SPECIFICATION

Light Source: 10W, 3000K, 900 Lumens

IP Code: 20

Dimming: Dimmable via mains phase dimming.

Dimensions: **Small:**

Shade: Ø35cm

Light Source: 27.5cm

Ceiling Canopy: Ø14cm x 7cm#

Cable Length: 370cm

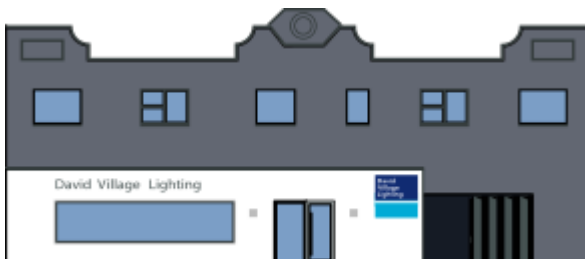
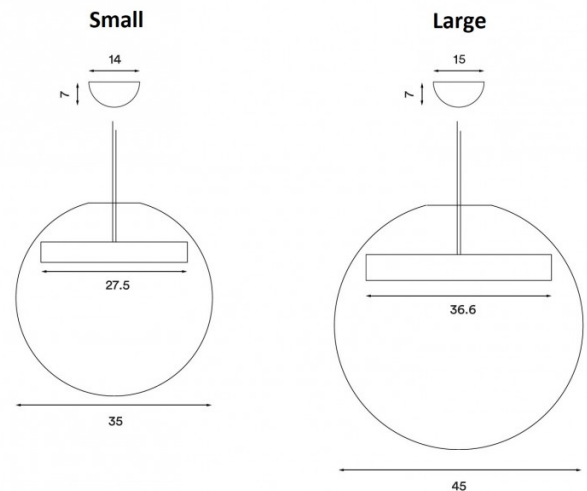
Large:

Shade: Ø45cm

Light Source: 36.6cm

Ceiling Canopy: Ø15cm x 7cm

Cable Length: 370cm



For all sales and technical enquiries, please contact:

+44 (0)114 263 4266

info@davidvillagelighting.co.uk

www.davidvillagelighting.co.uk