

# Northern Northern Blush LED Pendant

LA5875

SOURCE: <https://www.davidvillagelighting.co.uk/product/Northern-Blush-LED-Pendant/19831>



## PRODUCT DESCRIPTION

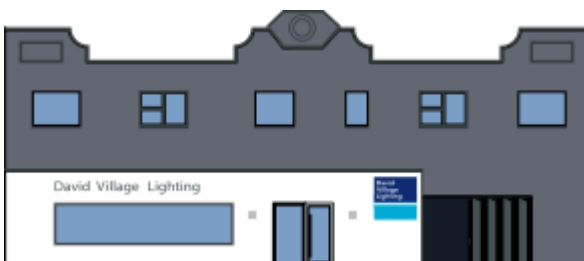
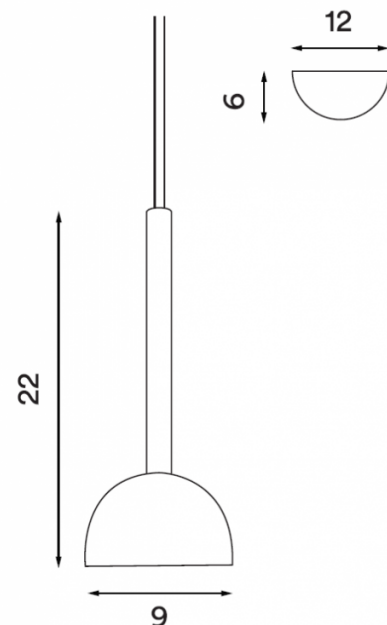
**Designer:** Morten & Jonas

### Blush LED Pendant by Northern

The Blush pendant complements the Blush wall lamp with a design that reflects its understated style and colourful character. Together, the two lights form a series that can coordinate with each other to create a single lighting scheme. The Blush pendant looks beautiful in a bedroom or a reading area.

## PRODUCT SPECIFICATION

**Light Source:** 6W, 3000K, 550 Lumens  
**IP Code:** 20  
**Dimming:** Dimmable via mains phase dimming.  
**Dimensions:** Shade: 9cm  
 Length: 22cm  
 Cable Length: 370cm



**For all sales and technical enquiries, please contact:**

+44 (0)114 263 4266

[info@davidvillagelighting.co.uk](mailto:info@davidvillagelighting.co.uk)

[www.davidvillagelighting.co.uk](http://www.davidvillagelighting.co.uk)