

normann
COPENHAGEN

Normann Copenhagen Amp Pendant

LA5431

SOURCE: <https://www.davidvillagelighting.co.uk/product/Normann-Copenhagen-Amp-Pendant/19031>



PRODUCT DESCRIPTION

Designer: Simon Legald

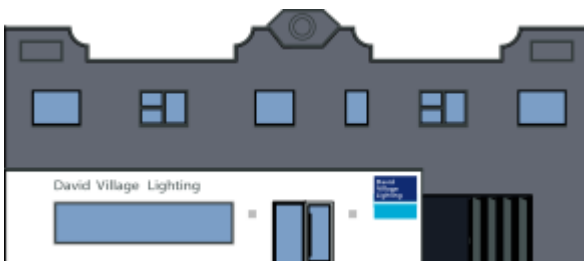
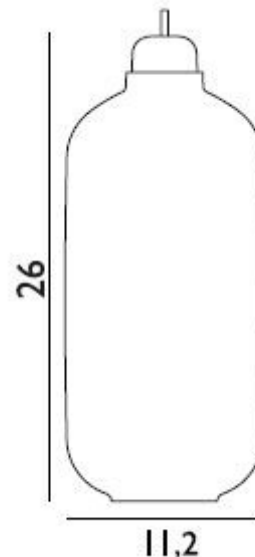
Normann Copenhagen Amp Pendant

Normann Copenhagen Amp Large Pendant Light was designed by Simon Legald. Inspired by old tube amplifiers from the 1960s, the Amp Pendant is a unique and stylish design which gives a nod to mid-century industrialism. Their unique shapes are built from classic materials of marble and glass which adds a nostalgic yet contemporary feel to the Amps design. Beautiful blown glass shades with an elongated form create an engaging design which can be installed singularly or as part of a cluster with a mix of sizes and colours.

Normann Copenhagen Amp pendant is ideal for communal areas such as hallways or installed in a linear formation over kitchen islands and dining tables. Amp's versatile style can work perfectly within contemporary and retro interior designs. Amp is also available in six different colour choices.

PRODUCT SPECIFICATION

Light Source: 1x Max 2W, E14 LED (excluded)
IP Code: 20
Dimming: Dimmable via mains phase dimming
Dimensions: Diameter: Ø 11.2cm
 Height: 26cm
 Cable: 400cm



For all sales and technical enquiries, please contact:

+44 (0)114 263 4266

info@davidvillagelighting.co.uk

www.davidvillagelighting.co.uk