

case

Case Solid Table Lamp LED

LA5338/T

SOURCE: <https://www.davidvillagelighting.co.uk/product/Case-Solid-Table-Lamp-LED/18851>



PRODUCT DESCRIPTION

Case Solid Table Lamp.

A pure cylindrical base, crafted from solid Italian fine-grained Carrara marble, is topped by a hand-blown opal glass shade which is acid-etched inside and out to provide a soft, diffused light. An integrated, state-of-the-art dimmable LED is controlled by a touch button on the marble base. As marble is a natural material the hue and veining will vary from piece to piece. The Solid Table Light measures 310mm diameter, 310mm high.

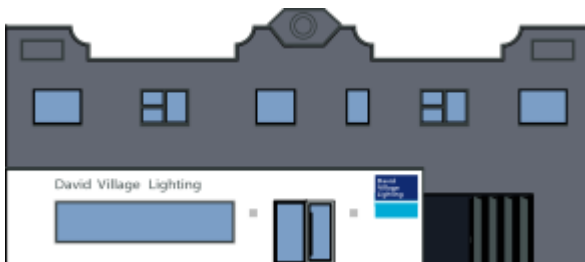
Material: Hand-blown, three-ply, acid-etched, opal glass

PRODUCT SPECIFICATION

Light Source: 12W, 3000K, 1100 lumens

Dimming: Touch dimmer

Dimensions: Ø 310mm.
H 310mm



For all sales and technical enquiries, please contact:

+44 (0)114 263 4266

info@davidvillagelighting.co.uk

www.davidvillagelighting.co.uk