

case

LA5338/CM

Case Solid Cylinder Downlight - Marble

SOURCE: <https://www.davidvillagelighting.co.uk/product/Case-Solid-Cylinder-Downlight---Marble/18847>



PRODUCT DESCRIPTION

Case Solid Cylinder Downlight - Marble.

A pure conical form, crafted from black stained European oak, lacquered matt. The rounded inner edge at the shade base is a design signature of the Solid collection. A small shadow gap between the ceiling and shade allows for lamp cooling. As oak is a natural material the grain will vary from piece to piece, making each shade body unique. All fixings are hidden.

Material: Fine-grained Carrara marble

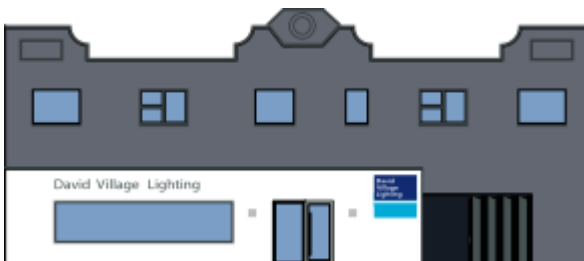
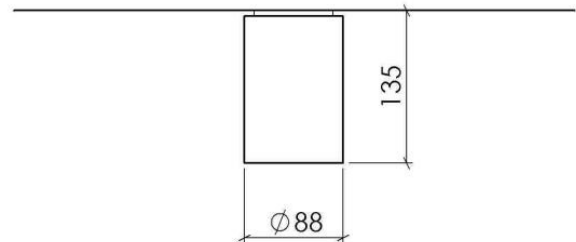
PRODUCT SPECIFICATION

Light Source: 1x 8W GU10 LED excluded

IP Code: 20

Dimming: Dimmable via mains phase dimming

Dimensions: Ø 88mm.
H 130mm.



For all sales and technical enquiries, please contact:

+44 (0)114 263 4266

info@davidvillagelighting.co.uk

www.davidvillagelighting.co.uk