

case

Case Core Triple Suspension

LA5337/3

SOURCE: <https://www.davidvillagelighting.co.uk/product/Case-Core-Triple-Suspension/18840>



PRODUCT DESCRIPTION

Case Core Triple Suspension.

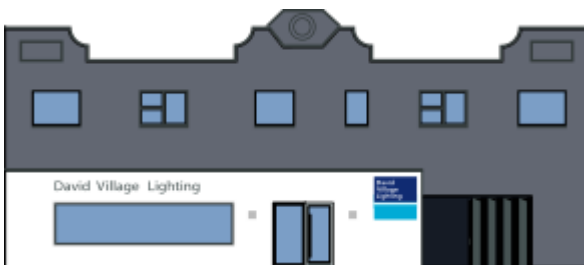
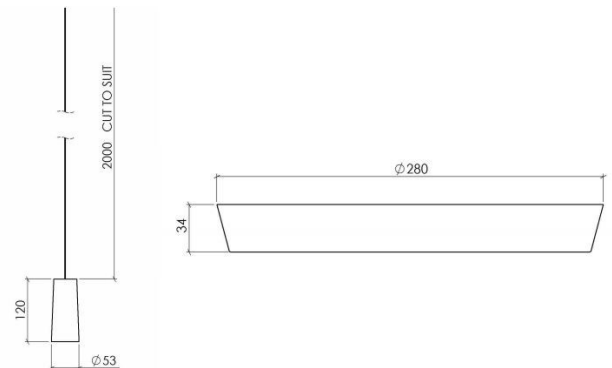
A simple but striking pendant, crafted from solid Italian fine-grained Carrara marble. A subtle diffused glow is produced around the lower section when lit. As marble is a natural material the hue and veining will vary from piece to piece, making each shade body unique.

Included: 2 metre matt white cable (Ø 4.5mm, 2 x 0.82) Conical steel ceiling fixing.

Material:
Fine-grained Carrara marble

PRODUCT SPECIFICATION

Light Source: 3x 3W G9 LED lamp excluded
IP Code: 20
Dimming: Dimmable via mains phase dimming
Dimensions: Ø 52mm.
H 120mm.
Each shade supplied with 2 metre matt white cable (Ø 4.5mm, 2 x 0.82)



For all sales and technical enquiries, please contact:

+44 (0)114 263 4266

info@davidvillagelighting.co.uk

www.davidvillagelighting.co.uk