



## ferm LIVING Collect Pendant - Cone

LA5090

SOURCE: <https://www.davidvillagelighting.co.uk/product/ferm-LIVING-Collect-Pendant---Cone/18467>



### PRODUCT DESCRIPTION

#### ferm LIVING Collect Pendant - Cone

With a seemingly infinite range of expressions, ferm LIVING's innovative and interchangeable lighting system allows you to create customised and contemporary looks in each and every room. Offered in a fully compatible series of multiple shapes and colours, COLLECT Lighting gives you the freedom to create beautiful lighting solutions. Simply select your chosen lampshade and pair with the series' decorative brass ring and one of two socket pendants.

The socket pendant comes complete with a decorative brass ring, canopy ceiling mount and 3M fabric-covered electrical cord.

### PRODUCT SPECIFICATION

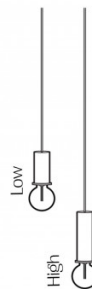
**Light Source:** 1 x max 25W E27 (excluded)  
OR  
1 x max 13W LED E27 (excluded)

**IP Code:** 20

**Dimming:** Dimmable via mains phase dimming.

**Dimensions:** Low socket - H 10.2 x W 6 x D 6 cm  
High socket - H 17 x W 6 x D 6 cm  
Cone Shade - Ø 25 x H 12cm

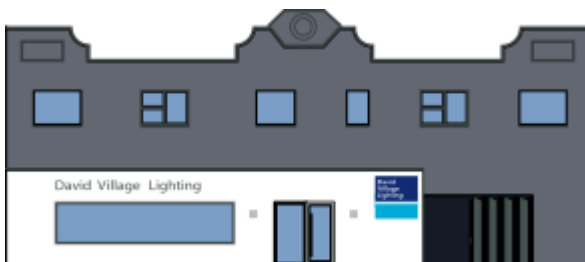
**Step 1**  
Select socket size



**Step 2**  
Select socket colour



**Step 3**  
Select shade colour



**For all sales and technical enquiries, please contact:**

+44 (0)114 263 4266

[info@davidvillagelighting.co.uk](mailto:info@davidvillagelighting.co.uk)

[www.davidvillagelighting.co.uk](http://www.davidvillagelighting.co.uk)