

LEE BROOM

LA5045

Lee Broom Fulcrum Single Pendant

SOURCE: <https://www.davidvillagelighting.co.uk/product/Lee-Broom-Fulcrum-Single-Pendant/18391>



PRODUCT DESCRIPTION

Designer: Lee Broom

Lee Broom Fulcrum Singular Pendant

The Lee Broom Fulcrum Pendant is considered an exploration of the role between pivots and supports, this cylindrical pendant structure is crafted from steel and suspended around a central sphere. This provides the pendant with a simple streamlined design, and although it takes up little space, the Fulcrum pendant should not be underestimated.

The dimmable function of the Fulcrum Singular Pendant will allow you to perfectly set the tone of any room and create the perfect ambience. The Fulcrum Light pendant is available in Gold, Chrome and Matte black.

Please note this product is for a single drop pendant

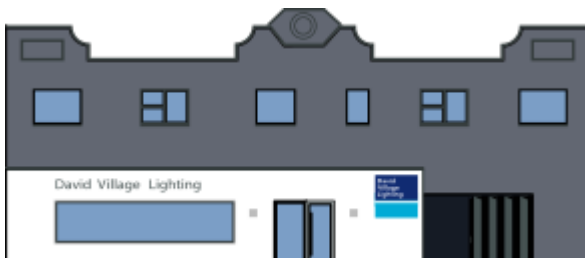
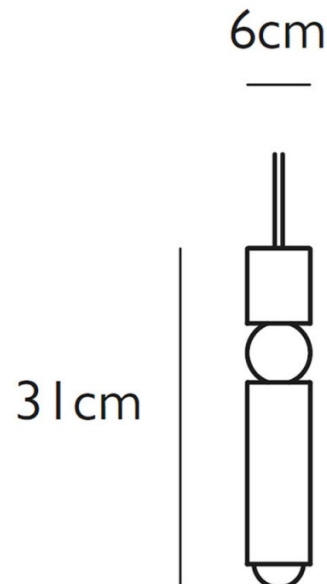
PRODUCT SPECIFICATION

Light Source: 1 x Max 6.2W E27 LED (included)

IP Code: 20

Dimming: Dimmable using leading edge (Triac).

Dimensions: Ø6cm
Length: 31cm
Ceiling rose: Ø12cm
Ceiling Rose Height: 3.3cm
Cable Length: 300 cm



For all sales and technical enquiries, please contact:

+44 (0)114 263 4266

info@davidvillagelighting.co.uk

www.davidvillagelighting.co.uk