

BROKIS®

Brokis Shadows Pendant

LA4861

SOURCE: <https://www.davidvillagelighting.co.uk/product/Brokis-Shadows-Pendant/18066>

PRODUCT DESCRIPTION

Designer: Dan Yeffet

Brokis Shadows Pendant

We currently have limited stock of this item in our [Clearance section](#).

The Brokis Shadows Pendant is another iconic design by Lucie Koldova, who took inspiration from classic lighting solutions found in French ateliers, creating these lights to pay tribute to their legacy. Shadows features a sleek hand-blown glass shade, often found in Brokis creations, and a handcrafted wooden body. Brokis Shadows is available in four varying shapes, each shape influences the downwards light diffusion, with the smaller variations creating a more direct spotlight while the larger shades allow for a wider dispersion of light.

Although just as striking when displayed individually, Brokis Shadows makes a statement when configured in clusters in larger spaces. This suspension light is a gorgeous addition to above dining tables, in stairwells, lobbies, and in larger living areas.

The Shadows collection is available in the following finishes:

Transparent Glass: Smoke grey, Smoke Brown, Opaline, Triplex opal, Pearl grey, Black

Wooden Body: Untreated European Oak, Natural Waxed European Oak, Stained Black European Oak, Stained White European Oak

For more information and pricing, please [contact us](#).

PRODUCT SPECIFICATION

Light Source: 1 x Max 5W GU10 (included)

IP Code: 20

Dimming: Dimmable via Triac dimming.

Dimensions: **PC894:**
Ø25cm
Height: 19.5cm

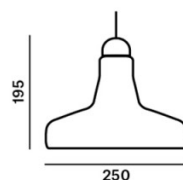
PC895:
Ø28cm
Height: 16.8cm

PC896:
Ø18.9cm
Height: 21.3cm

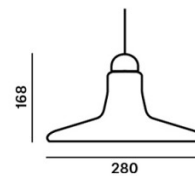
PC897:
Ø10.8cm
Height: 17.2cm

PC894

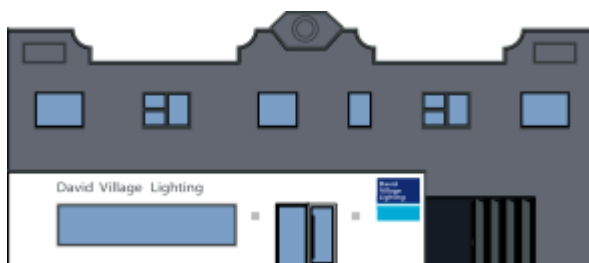
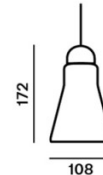
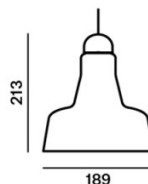
PC895



PC896



PC897



For all sales and technical enquiries, please contact:

+44 (0)114 263 4266

info@davidvillagelighting.co.uk

www.davidvillagelighting.co.uk