

BROKIS®

## Brokis Mona LED Table Lamp

LA4831

SOURCE: <https://www.davidvillagelighting.co.uk/product/Brokis-Mona-LED-Table-Lamp/18026>

## PRODUCT DESCRIPTION

**Designer:** Lucie Koldova**Brokis Mona LED Table Lamp**

The Brokis Mona LED Table Lamp is a sleek lighting solution which is based on the concept of penetrating forms. The curved shade is crafted from hand-blown glass with an integrated LED tube within, this table lamp is known for its unconventional construction and refined combination of materials. The fitted LED light source emits a warm glow that is projected both downwards and through the shade onto the surrounding area, the result is a peaceful ambience that is perfect for use in bedrooms, living rooms and reading nooks.

The Mona Table Lamp is available in a wide range of finishes, allowing you to choose your glass colour, body colour and even cable colour. For this reason, Mona grants you full control and allows you to select a lighting solution that is perfect for you and your space. Brokis Mona reaches its full potential in both residential and commercial environments.

**The Brokis Mona LED Table Lamp is available in the following options:**

**Transparent Glass:** Transparent, Smoke Grey, Opaline, Black or Violet

**Lamp body:** Black or white

**Textile cable:** Black or White

**Other colour temperatures are available, please [contact us](#) for more information and pricing.**



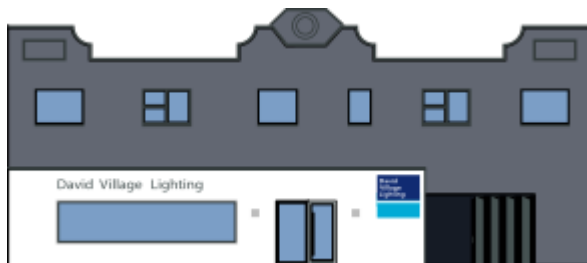
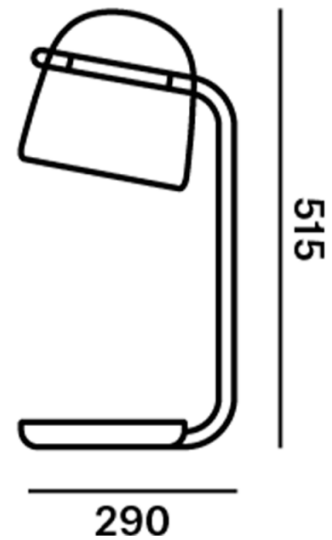
## PRODUCT SPECIFICATION

**Light Source:** 2.5W, 2700K, 141 Lumens

**IP Code:** 20

**Dimming:** Integrated dimmer on the product.

**Dimensions:** Height: 51.5cm  
Base: Ø29cm  
Cable Length: 220cm



**For all sales and technical enquiries, please contact:**

+44 (0)114 263 4266

[info@davidvillagelighting.co.uk](mailto:info@davidvillagelighting.co.uk)

[www.davidvillagelighting.co.uk](http://www.davidvillagelighting.co.uk)