

BROKIS®

## Brokis Mona LED Pendant

LA4828

SOURCE: <https://www.davidvillagelighting.co.uk/product/Brokis-Mona-LED-Pendant/18022>

## PRODUCT DESCRIPTION

**Designer:** Lucie Koldova**Brokis Mona LED Pendant**

The most versatile in the [Mona collection](#), the Brokis Mona LED Pendant features a hand blown curved glass shade which is suspended by a luxurious leather strap. An integrated LED tube is fitted within the shade and the projection of light is guided down and cast upon the space below - depending on the opacity of the glass finish you choose the illumination is also diffused through the glass which results in a more even dispersion of the light.

Defined by the contrast between the two materials and the skill and craftsmanship that went into production, the Mona LED Pendant is one of the brand's most recognisable designs. This futuristic-styled glass pendant by Lucie Koldova creates a stunning interplay of material and form. Perfect for residential and commercial spaces. Display individually or in larger clusters combining sizes and finishes to create a dramatic composition.

**The Brokis Mona LED Pendant is available with the following options:**

**Glass:** Transparent, Smoke Grey, Opaline, Black or Violet.

**Leather straps** Black, Natural, Grey or Dark Brown

**Please note, that the Mona pendant lights with grey and natural leather straps come with a white canopy, and black and dark brown leather with a black canopy.**

Alternative dimming options are also available. Please [contact us](#) for more information and pricing.



## PRODUCT SPECIFICATION

**Light Source:** 8W 2700K 470 Lumens

**IP Code:** 20

**Dimming:** Non-dimmable.

**Dimensions:** **Medium:**

Ø27cm

Height: 26cm

**Large:**

Ø38cm

Height: 38cm

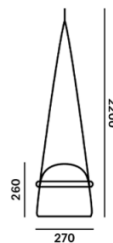
**X-Large:**

Ø50cm

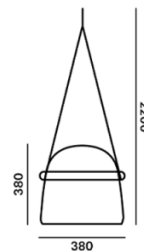
Height: 49cm

Drop Height: 220cm

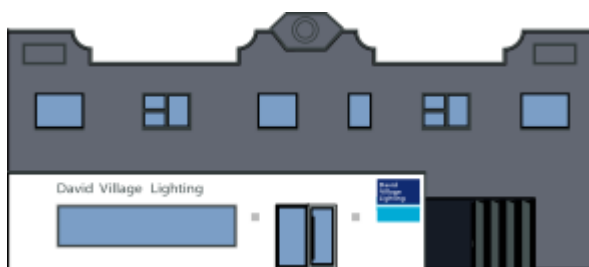
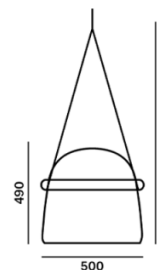
Medium:



Large:



X-Large:



**For all sales and technical enquiries, please contact:**

+44 (0)114 263 4266

[info@davidvillagelighting.co.uk](mailto:info@davidvillagelighting.co.uk)

[www.davidvillagelighting.co.uk](http://www.davidvillagelighting.co.uk)