

# LE KLINT

## Le Klint 157 Pendant

LA4718

SOURCE: <https://www.davidvillagelighting.co.uk/product/Le-Klint-157-Pendant/17838>



### PRODUCT DESCRIPTION

**Designer:** Andreas Hansen

### Model 157 by Le Klint

Andreas Hansen designed the Model 157 pendant light in 1965, which became known as Solomon's seal [*Polygonatum*]. The pendant bares resemblances to the flower genus, main one being a multiply jointed and perennial rhizome. The pleated lampshade, is multi-faceted and encloses the light source, therefore not emitting any glare. A suitable luminaire for high and low ceiling spaces, available in three sizes.

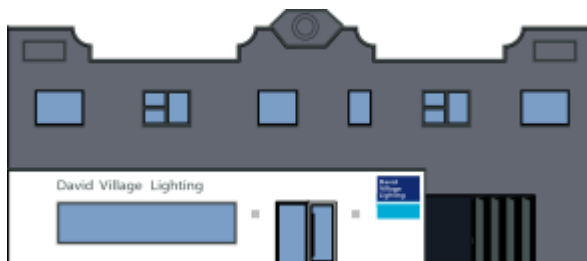
### PRODUCT SPECIFICATION

**Light Source:** Small - 1 x E27 40W max (excluded)  
Medium - 1 x E27 40W max (excluded)  
Large - 1 x E27 60W max(excluded)

**IP Code:** 20

**Dimming:** Dimmable via mains phase dimming

**Dimensions:** Small - Ø30cm, H 23cm  
Medium - Ø36cm, H 27cm  
Large - Ø44cm, H 33cm



**For all sales and technical enquiries, please contact:**

+44 (0)114 263 4266

[info@davidvillagelighting.co.uk](mailto:info@davidvillagelighting.co.uk)

[www.davidvillagelighting.co.uk](http://www.davidvillagelighting.co.uk)