

# LE KLINT

## Le Klint 153 Pendant

LA4717/153

SOURCE: <https://www.davidvillagelighting.co.uk/product/Le-Klint-153-Pendant/17835>



### PRODUCT DESCRIPTION

**Designer:** Andreas Hansen

### 153 Pendant Light by Le Klint

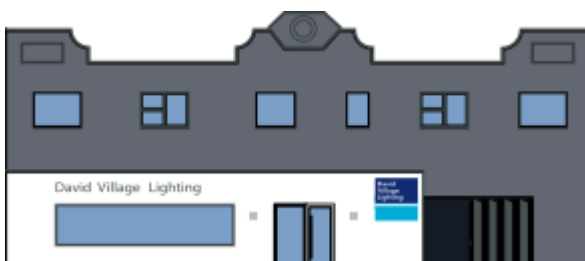
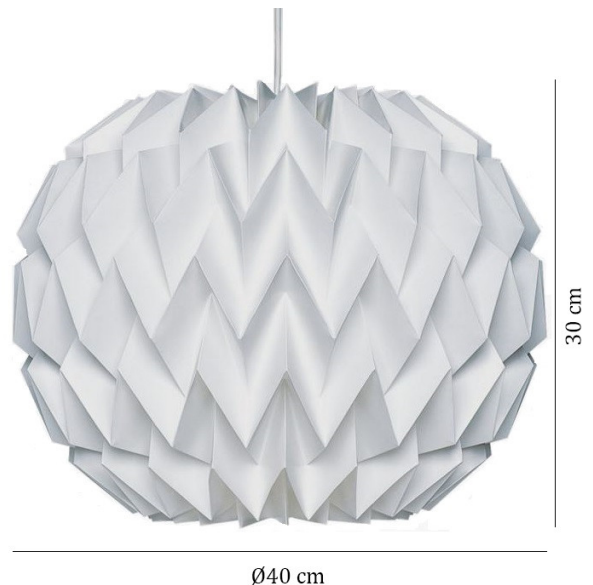
Andreas Hansen designed the Model 153 pendant in 1964 for Le Klint. Resembling a pine cone, the multifaceted and graphic surface of the lampshade is intriguing and compelling, standing the test of time because of its innovative and interesting design.

The enclosed and spherical shape of the pendant make it ideal for hanging at high or low levels, as the 153 gives off a glare free luminescence, which ultimately creates a warm atmosphere. With a unique and textural design, the 153 pendant light will look both striking and artistic in both home and work settings. The anti-static PVC guarantees the quality of the pendant and provides longevity.

**Materials:**  
Plastic Foil

### PRODUCT SPECIFICATION

**Light Source:** 1 x E27 40W max (excluded)  
**IP Code:** 20  
**Dimming:** Dimmable via mains phase dimming  
**Dimensions:** Ø40cm  
35cm height  
3m cable length



**For all sales and technical enquiries, please contact:**

+44 (0)114 263 4266

[info@davidvillagelighting.co.uk](mailto:info@davidvillagelighting.co.uk)

[www.davidvillagelighting.co.uk](http://www.davidvillagelighting.co.uk)