

Resident

## Resident Parison Pendant

LA4462

SOURCE: <https://www.davidvillagelighting.co.uk/product/Resident-Parison-Pendant/17397>



### PRODUCT DESCRIPTION

**Designer:** Cheshire Architects

### Resident Parison Pendant

Parison by Resident is mouth-blown from a mixture of black and clear glass. Its surface is a fluid gradient from opaque to transparent. Housed in the neck of the pendant, a high-quality lamp creates a warm glowing fixture. The underside contains slanted facets, creating a beautiful contradiction between the smooth and jagged surfaces.

The Parison pendant was designed by Cheshire Architects who were founded in 2004 in Auckland, New Zealand. This minimalistic pendant can be hung in a cluster or alone for a great feature in most living areas.

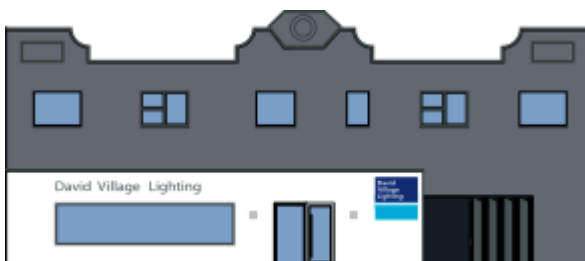
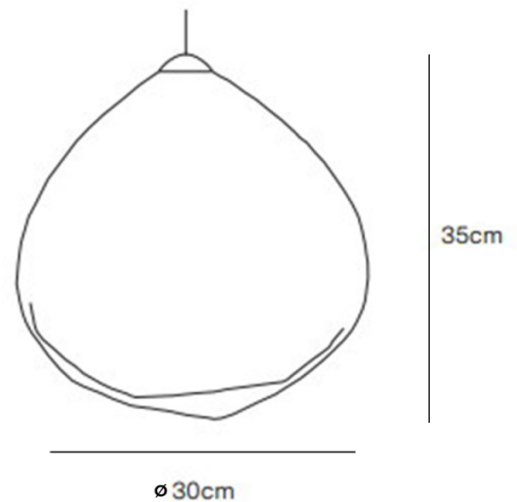
### PRODUCT SPECIFICATION

**Light Source:** 1X Max 6W, E26 (Included)

**IP Code:** 20

**Dimming:** Dimmable via mains phase dimming

**Dimensions:** Height: 35cm  
Diameter: Ø 30cm  
Cable: 260cm



**For all sales and technical enquiries, please contact:**

+44 (0)114 263 4266

[info@davidvillagelighting.co.uk](mailto:info@davidvillagelighting.co.uk)

[www.davidvillagelighting.co.uk](http://www.davidvillagelighting.co.uk)