



Luceplan Pétale Pendant LED

LA3819

SOURCE: <https://www.davidvillagelighting.co.uk/product/luceplan-ptale-pendant-led/16579>



PRODUCT DESCRIPTION

Designer: Odile Decq

Luceplan Petale Pendant

The Luceplan Petale is a minimalistic pendant light with an organic form. The design was inspired by nature, specifically a floating petal - which was the inspiration for the name. This piece was designed by Odile Decq for Luceplan in 2011 and remains just as influential now as the day it were released.

This pendant light is made from a sound absorbent panel that is dressed in white fabric, improving the acoustics in your space. Sounds are completely absorbed with this design, making it great for public hospitality spaces or areas in your home where you often host or gather with friends. The Luceplan Petale is a non-dazzling luminaire that points directly downwards and is dimmable, meaning you can personalise your light intensity to fit your own needs, offering both a beautiful and functional light.

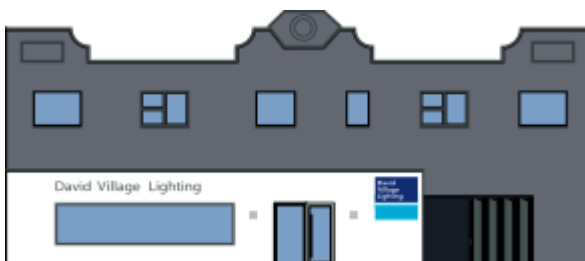
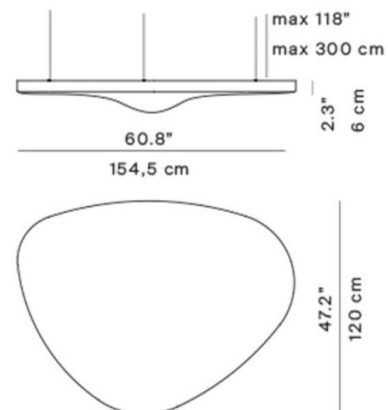
PRODUCT SPECIFICATION

Light Source: 21W, 3000K, 1514 Lumens

IP Code: 20

Dimming: Dimmable via Dali dimming systems. Please consult your electrician, additional wiring may be required.

Dimensions: Max Drop: 300cm
Body: 154.5cm x 120cm
Depth: 6cm



For all sales and technical enquiries, please contact:

+44 (0)114 263 4266

info@davidvillagelighting.co.uk

www.davidvillagelighting.co.uk