

MUUTO**Muuto Connect Modular Sofa****LA10043**SOURCE: <https://www.davidvillagelighting.co.uk/product/Muuto-Connect-Modular-Sofa/16362>**PRODUCT DESCRIPTION****Designer:** Anderssen & Voll**Connect Modular Sofa by Muuto**

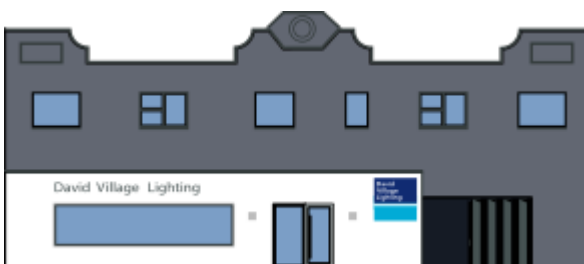
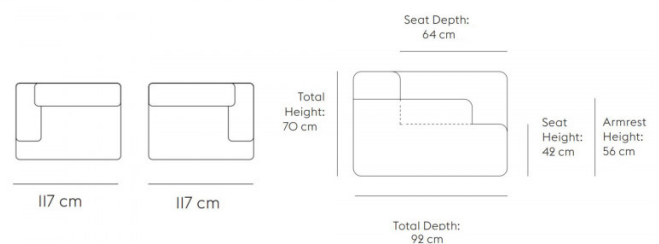
The Connect Modular Sofa by Muuto is a unique furniture solution that is based on the idea of finding the ideal connections between the various modules of the sofa. It offers an easily personalised way to furnish your interior and the design is influenced by modernism and architecture, with great attention to detail, as commented by designers Anderssen and Voll.

The [Connect Modular](#) Sofa System was designed in a way that you could pick and choose between the available modules, whether centre, end or lounge modules, and create the perfect sofa for your home. Furthermore, you can personalise the sofa even more by choosing between the large textile collection by Kvadrat and each textile is further available in various colour options. Connect also offers accessories for the system such as cushions and a foot stool - both able to be colour matched to your sofas finish.

Please [contact us](#) for further information and pricing if you wish to create your own, personalised Connect Modular sofa.

**PRODUCT SPECIFICATION**

Dimensions: Seat Depth: 64cm
 Seat Height: 42cm
 Armrest Height: 56cm
 Total Height: 70cm

**For all sales and technical enquiries, please contact:**

+44 (0)114 263 4266

info@davidvillagelighting.co.ukwww.davidvillagelighting.co.uk