

**Artemide**

LA7133/S

## Artemide Meteorite Suspension Light

SOURCE: <https://www.davidvillagelighting.co.uk/product/Artemide-Meteorite-Suspension-Light/16064>



### PRODUCT DESCRIPTION

**Designer:** Pio & Tito Toso

### Meteorite Suspension by Artemide

Brothers Pio and Tito Toso designed the Meteorite collection, which won the Red Dot Award in 2015. Following the tradition of Venetian beaten glass, the designers created a new technique through which created a raw and unfinished texture on the end product. When the light is switched on, a microcosms highlighted on the surface, are illuminated and beautifully stand out.

The Meteorite family includes a series of wall/ceiling, table, suspension and ceiling lights. The glass diffuser has a double layer, and is blown moulded first and then frosted. This process amplifies the effect of the meteorite-like diffuser. As its name might give away, the light was named after the glass-like rocks that travel through space. When commenting on their design, Pio and Tito added how their aim was to "obtain impressive lighting depth in the illuminated object and to make this beauty accessible". The suspension lights are available in three sizes: Meteorite 15, Meteorite 35 and Meteorite 48.

### PRODUCT SPECIFICATION

**Light Source:** **Meteorite 15** - 1 x 4W LED DIM E14 (excluded)  
**Meteorite 35** - 1 x 21W LED DIM E27 (excluded)  
**Meteorite 48** - 1 x 21W LED DIM E27 (excluded)

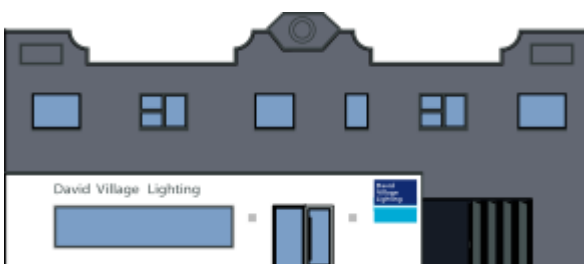
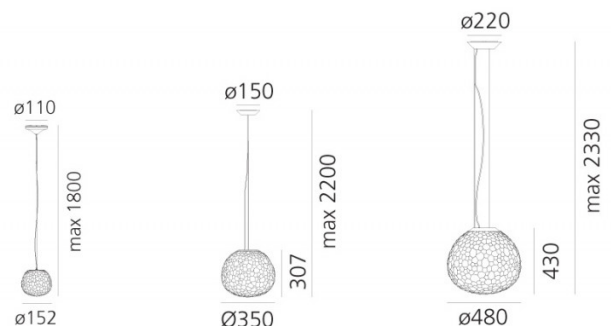
**IP Code:** 20

**Dimming:** Dimmable via mains phase dimming.

**Dimensions:** **Meteorite 15** - Ø15.2 cm, Ø11 cm ceil.rose, 180cm max cord

**Meteorite 35** - Ø35cm, 30.7cm H, Ø15cm ceil.rose, 220cm max cord

**Meteorite 48** - Ø48cm, 43cm H, Ø22cm ceil.rose, 233cm max cord



**For all sales and technical enquiries, please contact:**

+44 (0)114 263 4266

[info@davidvillagelighting.co.uk](mailto:info@davidvillagelighting.co.uk)

[www.davidvillagelighting.co.uk](http://www.davidvillagelighting.co.uk)